

# 2023 UPHA/AMERICAN ROYAL

*National Championship Horse Show*



NOVEMBER 6-11, 2023 | AMERICAN ROYAL COMPLEX | KANSAS CITY, MO



## IMPROVING YOUR PERFORMANCE

- High quality stall mats for rent
- No hassle of hauling mats

Add Pro Plus+ to your order and have your stall disinfected and shavings spread before you arrive.

**WWW.STALLMATRENTALS.COM**

**CALL 855-MATS-200**



---

# *Table of Contents*

---

Officers.....	5
Directions .....	9
Kansas City Accommodations .....	10
The UPHA Open Gate Learning Center .....	13
Show Officials .....	14
2023 Judges.....	15
Advertising And Sponsorship Opportunities .....	19
Rules And Regulations.....	21
Tentative Schedule .....	27
Scholarship .....	29
American Saddlebred Horse Division.....	41
Five Gaited Division.....	41
Three Gaited Division.....	42
Fine Harness Division .....	45
Saddlebred Park Division.....	46
Saddlebred Park Pleasure Division.....	46
American Saddlebred Pleasure Horse Division.....	47
Country Pleasure Division.....	49
Open Parade Horse Division.....	50
Saddle Seat Equitation .....	51
USEF Saddle Seat Medal Final.....	51
UPHA Challenge Cup National Championship Classes .....	51
American Royal Saddle Seat Equitation .....	52
Roadster Division.....	53
Hackney Pony Division .....	55
Sponsorship Form.....	58





---

# *The UPHA American Royal National Championship*

---



---

## **AMERICAN ROYAL OFFICERS**

---

### **HORSE SHOW MANAGER**

Kent Moeller

### **PRESIDENT AND CEO**

Jackie McClaskey

### **EQUINE EVENT MANAGER**

Ashlyn Justice

### **TROPHY COORDINATOR**

Ashlyn Justice

## **UPHA AMERICAN ROYAL NATIONAL CHAMPIONSHIP**

### **STEERING COMMITTEE**

Paul Boone  
Smith Lilly  
Cindy Mugnier

Carol Carlson  
Missy Hughes Smith  
Chuck Herbert

### **ADVISORY COMMITTEE**

Ashlyn Justice  
Paul Boone  
Cindy Mugnier  
Chuck Herbert

Missy Hughes Smith  
Smith Lilly  
Kent Moeller  
Carol Carlson

## **2023 AMERICAN ROYAL HORSE SHOW COMMITTEE**

Missy Hughes Smith, Chair

Carol Carlson  
Diana Ennis  
Mark Thomas  
Carol Friel  
Missy Hughes-Smith  
Shirley Hughes

Ashlyn Justice  
Pat O'Brien  
Sarah Rowland  
Susan Spencer  
Phil Balano  
Delynn Uttecht



## The American Royal Association

Woven through the history of Kansas City since 1899, the American Royal inspires and cultivates dreams by providing opportunities for agricultural competitive learning, educational experiences, and scholarships. The American Royal is a 501 (c) (3) not-for-profit organization that contributes more than \$1 million annually through youth education programs and scholarships. Over 270,000 attendees annually attend American Royal events that generate over \$60 million of economic impact. To learn more about the American Royal visit [AmericanRoyal.com](http://AmericanRoyal.com).

**Vision** - Our vision is a world where food and agriculture are celebrated, and all generations are committed to its future.

**Mission** - Our mission is to be the Nation's leader for food and agriculture education, events, and engagement.

**Purpose** - We exist to champion food and agriculture.

### **Did you know...?**

The American Royal has partnered with five local elementary schools to provide agricultural education experiences for students throughout the Kansas City metro area. The American Royal Neighborhood Schools Program brings the farm and ranch into the Kansas City classroom, and takes students out of the classroom for fun, eye-opening experiential learning that only the American Royal can deliver. Where our food comes from and who shapes the future of agriculture are vital issues for young people and their communities. The 2019-20 partner schools include Allen Village, Crossroads Academy, Gordon Parks Elementary, Piper Elementary and Rosehill Elementary.



### 2023 OFFICERS OF THE BOARD OF GOVERNORS

Gordon Lansford, Chairman, JE Dunn  
Charlie Tetrick, First Vice Chairman, Walz Tetrick  
Cynthia Savage, Co-Vice Chairman, Raphael Hotel Group  
Angie Stanland, Co-Vice Chairman, TIFEC  
John Mitchell, Jr., Co-Vice Chairman, Mission Drive Capital

### 2023 AMERICAN ROYAL OFFICERS & DIRECTORS

Ken Wagner, Chairman, Retired, Heritage Tractor  
Lindsey Smith, Vice Chairman, Excolo, LLC  
Brad Bendle, Treasurer, Next-Level Growth Strategies  
Walt George, Secretary, G3 Consulting, LLC  
Jackie McClaskey, President & CEO, American Royal Association

#### Term Ending Spring 2024

Brad Bendle, Next-Level Growth Strategies (2)  
Bret Borota, Amazon Web Services (2)  
Carol Carlson, Community Vol. (3)  
Tim Congrove, Shook, Hardy & Bacon (1)  
Walt George, G3 Consulting, LLC (2)  
Brian Illig, TIFEC (1)  
Mark Kolkhorst, Retired, ADM (1)  
Ann Konecny, Foley Equipment (3)  
Gordon Lansford, JE Dunn (1)  
Missy Love, BioStar Renewables (2)  
Alex Lowe, Go Chicken Go (2)  
Ford Maurer, Foxx Equipment (3)  
Jeanette Prenger, ECCO Select (1)  
Jara Settles, LMA (2)  
Lindsey Smith, Excolo, LLC (3)  
Mark Stewart, AFA (2)  
David Stofer, Mariner Wealth Advisors (2)  
Charlie Tetrick, Walz Tetrick (2)  
Ryan Wilkerson, Haas & Wilkerson (3)

#### Term Ending Spring 2025

Andrew Fahey, JM Fahey Construction (1)  
Cliff Illig, TIFEC (3)  
John Lagemann, Retired, John Deere (3)  
Pat Macy, Oracle Cerner (1)  
Russ Meinhardt, OWS Foods (1)  
John Moncke, KC Power & Light District (1)  
Sarah Tate, Sanofi (1)  
Jeff Yowell, Getter Farms, LLC (1)

#### Term Ending Spring 2026

Megan Bubb, Reece Nichols (1)  
John Fuchs, Edward Jones (2)  
Jim Gamble, Keller Williams (1)  
Richard Green, U.S. Engineering (1)  
Alden Harris, Bartlett (1)  
Angela Hudson (1)  
David Morris, Retired (1)  
Blake Nelson, American Maine-Anjou (2)  
Ben Nichols, Compass Minerals (1)  
Mike Roos, KPMG (2)  
Mark Thomas, Copaken Brooks (1)  
Ken Wagner, Heritage Tractor (2)  
Jack Ward, American Hereford Assoc. (3)

#### Additional Voting Members:

BOTAR Representative (Immediate Past President) **Amy Polen**  
Saddle and Sirloin Club Representative (Immediate Past President) **Bob Marsh**  
Serving in first three-year term (1) Serving in second three-year term (2) Serving in third three-year term (3)

### **LIFETIME DIRECTORS**

Malcolm M. Aslin, Entrepreneur  
Bryan Beaver, Flat Tail Ranch  
H.D. Cleberg, Retired, Farmland  
David Fowler, Retired, KPMG  
Mary Hunkeler, Retired

Mariner Kemper, UMB  
Brant Laue, Laue Ranch  
Pete Lemke, Retired, EFL Associates  
Fred Lyons, Five Creek Farm  
Greg Maday, SpecChem

John Mitchell, Jr., MDC  
Bob Petersen, Petersen Consult.  
Cynthia Savage, Raphael Hotel  
Angie Stanland, TIFEC

### **HONORARY DIRECTORS FOR LIFE**

John Dillingham  
H.D. "Joe" Hale

### **EXECUTIVE COMMITTEE**

Brad Bendle	Tim Congrove
Walt George	Gordon Lansford
Pat Macy	Jeanette Prenger
Mike Roos	Cynthia Savage
Jara Settles	Lindsey Smith
Angie Stanland	David Stofer
Charlie Tetrick	Ken Wagner
Ryan Wilkerson	Jeff Yowell

### **2023 ADVISORY DIRECTORS**

Secretary Mike Beam, Kansas Department of Agriculture  
Director Chris Chinn, Missouri Department of Agriculture  
Kurt Mayo, Hotel & Lodging Association  
Izabella Michitsch, Chairman's Club  
Joe Reardon, Greater Kansas City Chamber of Commerce  
Joe Rebein, Saddle and Sirloin  
Michael Stafford, Chairman's Club  
Bob Thompson, Bryan Cave  
Carolyn Wells, Kansas City Barbecue Society  
Nancy Wilkerson, BOTAR  
Kim Young, Kansas City Animal Health Corridor



---

# *Directions to the American Royal Complex*

---

## **From the North:**

Take I-29/I-35 south across the Paseo Bridge. Take I-70 east to I-670 west. Exit at Wyoming, Genessee, Kemper Arena exit. Turn left on Genessee (one way going south). Come south to the American Royal Complex. Follow signs for parking. **All trailers and barn passes will enter through the Livestock Gate.**

## **From the East:**

Take I-70 west to I-670 west. Exit at Wyoming, Genessee, Kemper Arena exit then turn left on Genessee and come south to the American Royal Complex, follow signs for parking. **All trailers and barn passes will enter through the Livestock Gate.**

## **From the South:**

Take I-35 north to I-670 west and exit at Wyoming, Genessee, Kemper Arena exit. Turn left on Genessee and come south to The American Royal Complex, follow signs for parking. **All trailers and barn passes will enter through the Livestock Gate.**

## **From the West:**

Take I-70 East, to I-670 East to Genessee exit. Turn right on Genessee to American Royal Complex and follow signs for parking. **All trailers and barn passes will enter through the Livestock Gate.**

---

## **ENTRY DEADLINE: OCTOBER 9, 2023**

Mail your entries to:

Beth Snider

65 Old Taylorsville Road

Shelbyville KY, 40065

Cell: (502) 314-7960

E-Mail: [horseshowentries18@gmail.com](mailto:horseshowentries18@gmail.com)

---

---

# *Kansas City Accommodations*

---

Marriott Downtown (Preferred)

200 W. 12<sup>th</sup> St  
Kansas City, MO 64105  
800-608-9653  
Booking Code: 0A9

Use link at [www.americanroyal.com](http://www.americanroyal.com)

Hilton Garden Inn

520 Minnesota Ave,  
Kansas City, KS 64101

Use Company Name: American Royal

Use link at [www.americanroyal.com](http://www.americanroyal.com)

La Quinta Inn & Suites

2321 Troost Avenue  
Kansas City, MO 64108

Westin Crown Center

1 East Pershing Road  
Kansas City, MO 64108  
816-474-4400

Great Wolf Lodge

10401 Cabela Dr.  
Kansas City, KS 66111  
800-608-9653

Courtyard by Marriott

4000 N Mulberry Dr.  
Kansas City, MO 64116  
816-841-3300

Hampton Inn & Suites

4600 Summit St.  
Kansas City, MO 64112  
816-448-6400

Use link at [www.americanroyal.com](http://www.americanroyal.com)

Hotel Phillips

106 W 12<sup>th</sup> St.  
Kansas City, MO 64105  
816-221-7000

Sheraton

2345 McGee St  
Kansas City, MO 64108  
816-841-1000

Crowne Plaza Hotel

1301 Wyandotte St.  
Kansas City, MO 64105  
816-474-6664

Home2 Suites

3440 Rainbow Blvd  
Kansas City, KS 66103  
913-335-9950

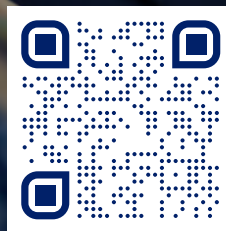
**CAMPER AND MOBILE HOME SPACE:** Reservations to be made through the American Royal Website at: [www.americanroyal.com](http://www.americanroyal.com). Limited space is available. Electric hook-up, only. No sewer or water.

# SUPPORT

## OUR SADDLE SEAT PROGRAMS



Help support the US Saddle Seat team on their journey for Gold at the 2024 World Cup Competition in Parys, South Africa



*If you're interested in learning more about the sponsorship opportunities for our Medal programs, please visit our [online brochure](#).*







# INTERESTED IN COMPETING IN NEXT YEARS' MEDAL FINAL?

USEF Saddle Seat Medal classes are open to junior and adult amateurs riders. Junior riders must place first through fourth in a USEF Saddle Seat Medal qualifying class to be eligible to compete in the Final. For more information on how to qualify for the Junior and Adult Amateur medals, please visit our USEF Saddle Seat Page by scanning the QR code below.





---

# *The UPHA Open Gate Learning Center*

---



## **UPHA/AMERICAN ROYAL NATIONAL CHAMPIONSHIP**

**NOVEMBER 6-11, 2023**

The goal of the Open Gate Learning Center is to help students to complete assignments required by their teachers while absent from school. Basic support such as clarification of assignments, proofreading work, proctoring tests and answering a student's questions are provided.

The Center is also able to receive assignments, PowerPoint notes, outlines, etc. from teachers throughout the horse show.

**\*This program is offered at no charge to all junior members of UPHA.**

For information about the program or to enroll your child contact:

Debbie Murphy

37 Five Dog Ln. Lexington, VA 24450

804-366-9455 cell

[opengatelearningcenter@gmail.com](mailto:opengatelearningcenter@gmail.com)

---

# *Horse Show Officials*

---

## **HORSE SHOW MANAGER**

Kent A. Moeller, Versailles, KY

## **DAY TECHNICAL COORDINATOR**

Nick Pelham, Bath, NY

## **NIGHT TECHNICAL COORDINATOR**

Dewey Huckaby, Brooksville, FL

## **USEF STEWARD**

Stacey Wright, Roanoke, VA

## **ANNOUNCER**

Peter Fenton, Land O'Lakes, FL

## **RINGMASTERS**

Jerome Parker, Northford, CT  
Dewey Bass, Simpsonville, KY

## **PADDOCK**

Wyatt Lilly, Princeton, WV  
Austin Waggoner, Shelbyville, KY

## **MOS TABULATOR**

Kevin Michael, Fresno, CA  
Lori Nelson, Paris, KY

## **STABLE MANAGER**

Kent A. Moeller, Versailles, KY  
(804) 363-3085

## **ORGANIST**

Gene Wright, Shelbyville, KY

## **Horn Player**

Vickie Friedmann, Jones, OK

## **FARRIER**

Bill McDonald, Garden City, MO

## **PHOTOGRAPHER**

Howard Schatzberg, Cave Creek, AZ  
(480) 595-2865

## **VIDEO PRODUCTION & WEBCAST**

Richfield Video, Shelbyville, KY  
(502) 664-0880

## **STALL DECORATOR**

Andy Carman, Juel Carman LLC  
(317) 437-5094

## **COMPETITION SECRETARIES**

Kelly McFaul, Wichita, KS  
Sandy Backer, Columbia, MO

## **ENTRY SECRETARY**

Beth Snider  
65 Old Taylorsville Road  
Shelbyville, KY 40065 (502) 314-7960

## **SHOW VETERINARIAN**

*TBD*

---

## **NOVEMBER 6-11, 2023**

Entries Close October 9, 2023

---

---

# 2023 UPHA/American Royal Judges

---

## **SADDLEBREDS, ROADSTER, HACKNEY PONIES AMERICAN ROYAL SADDLE SEAT EQUITATION**

Heather Boodey, Franklinton, NC  
Paul Boone, Concord, NC  
Adam Clauson, Bonnieville, KY

## **USEF SADDLE SEAT MEDAL FINAL**

Heather Boodey, Franklinton, NC  
Betsy Boone, Concord, NC  
Dwayne Knowles, Kutztown, PA

## **UPHA CHALLENGE CUP CHAMPIONSHIPS**

### **UPHA EXCEPTIONAL CHALLENGE CUP**

Mary Lou Carrick, Gaffney, SC  
Renee Lavery, Simpsonville, KY  
Cindy Mugnier, Kittery Point, ME



---

### **USEF APPROVED DIVISIONS:**

American Saddlebred Horse  
Parade  
Roadster Horse  
Saddle Seat Equitation  
Roadster Pony and Hackney Pony

---

### **USEF MEMBERSHIP STATEMENT**

Life, senior active and junior active members shall be eligible to participate in all classes at Regular Competitions, Eventing Competitions at the Modified Level or above and Combined Driving Competitions at the Advanced Level, Dressage, Reining and Vaulting Competitions and Endurance Rides. A nonmember may participate as a handler, rider, driver, owner, lessee, agent, coach or trainer at Regular Competitions, Eventing Competitions, Dressage Competitions, Reining Competitions and Combined Driving Competitions upon payment of a \$45 Show Pass fee. Participants in the following classes are exempted from the Requirements of this rule: 1) leadline; 2) exhibitions; 3) games and races; 4) classes for 4-H members; 5) walk trot (exception: Friesian performance FR222) and academy classes (academy classes are classes limited to horses used regularly in a lesson program); 6) USDF introductory level tests, pas de deux and quadrille classes; 7) NRHA Endorsed Reining Competitions. 8) Opportunity classes, 9) citizens of other nations who have proof, in English, of current membership in good standing of their own National Federation, 10) USEA beginner novice division; and 11) assistant handlers in Dressage Sport Horse Breeding classes.

Exhibitors are requested to thoroughly acquaint themselves with the following rules and regulations. Exhibitors participating in divisions recognized by the USEF will also be governed by USEF rules. Any changes in the current USEF rule book will automatically become a part of this prize list. EVERY CLASS OFFERED HEREIN WHICH IS COVERED BY THE RULES AND SPECIFICATIONS OF THE CURRENT USEF RULE BOOK WILL BE CONDUCTED AND JUDGED IN ACCORDANCE THEREWITH. All exhibitors are required to be thoroughly acquainted with any and all federal and state laws and regulations governing horses and horse shows. The American Royal Association, Inc., reserves the right to decline any exhibitor and/or said exhibitor's horses before the show and reserves the right to order from the premises during the show any exhibitor and/or exhibitor's horses without being held liable for damages of any kind, and this shall be accepted as a condition of entry. In this event, all fees paid, and prize money won shall be forfeited. It is also a condition of entry that each exhibitor shall hold the American Royal Association, Inc, its directors and employees, and the UPHA, its directors and employees, harmless for any loss, damage or accident to horses or equipment.

**USEF ENTRY AGREEMENT:** By entering a Federation-licensed Competition and signing this entry blank as the Owner, Lessee, Trainer, Manager, Agent, Coach, Driver, Rider, Handler, Vaultor or Longeur and on behalf of myself and my principals, representatives, employees and agents, I agree that I am subject to the Bylaws and Rules of The United States Equestrian Federation, Inc. (the "Federation") and the local rules of UPHA American Royal National Championship Horse Show. I agree to be bound by the Bylaws and Rules of the Federation and of the competition. I will accept as final the decision of the Hearing Committee on any question arising under the Rules, and agree to release and hold harmless the competition, the Federation, their officials, directors and employees for any action taken under the Rules. I represent that I am eligible to enter and/or participate under the Rules, and every horse I am entering is eligible as entered. I also agree that as a condition of and in consideration of acceptance of entry, the Federation and/or the Competition may use or assign photographs, videos, audios, cable - casts, broadcasts, internet, film, new media or other likenesses of me and my horse taken during the course of the competition for the promotion, coverage or benefit of the competition, sport, or the Federation. Those likenesses shall not be used to advertise a product and they may not be used in such a way as to jeopardize amateur status. I hereby expressly and irrevocably waive and release any rights in connection with such use, including any claim to compensation, invasion of privacy, right of publicity, or to misappropriation. The construction and application of Federation rules are governed by the laws of the State of New York, and any action instituted against the Federation must be filed in New York State. See GR908.4

USEF Competition Name: UPHA American Royal National Championship

USEF#: 600

Competition Division(s) and Rating(s):

Rated N Hackney Pony, Saddle Seat Equitation, Saddlebred, Parade, Roadster



# MAAPP

## MINOR ATHLETE ABUSE PREVENTION

### LEARN ABOUT MAAP POLICIES



Safe Sport Training



Local Travel



One-On-One Interactions



Social Media & Electronic Communications



Read about these & more at [usef.org/MAAPP](https://usef.org/MAAPP)

### REPORT MAAP POLICY VIOLATIONS



[usef.org/safe-sport/reporting](https://usef.org/safe-sport/reporting)

859-225-6915 or Text Anonymously 855-682-8733





# FACILITY PARKING INFO

*Thank you for helping us execute our parking layout. This will help us continue to implement the facility emergency preparedness plan and create unobstructed access to all facility entrance ways for emergency vehicles. Thank for helping us keep people safe.*



## *Behind the Barns*

Parking behind the barns will be strictly for trailer unloading and loading only. There will be no vehicle parking at any time permitted directly behind the barns. Trailers will continue to park in the very south end of Lot A, like in years past. Entry gates will be monitored at all times.

## *The Barn Pass*

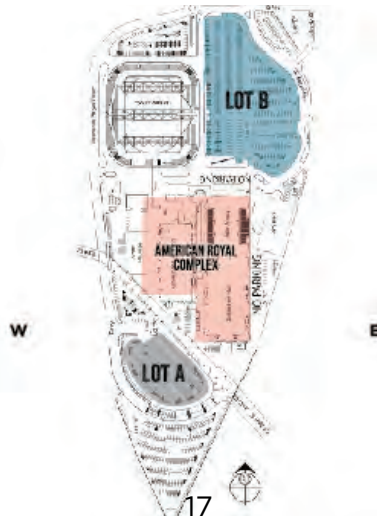
The Barn Pass is still available for Lot A parking in limited quantity. Barn Passes authorizes exhibitors to park one vehicle in parking Lot A, located on the South side of the barns. No trailers are allowed with this pass. Entry gates will be monitored at all times. There will be a limited quantity of Barn Passes available for purchase. The parking section is accessed through the back ticket booths.

## *Lot B Parking*

All other parking will be in Lot B. This is the lot in front of Hy-Vee Arena, the old Kemper Arena. We will sell Premium Passes for Lot B. These passes are unlimited. Premium Passes authorizes exhibitors to park in parking Lot B. Entry gates will be monitored during ticketed performances and there will be a \$10.00 per entry charge without a pass. There will be a shuttle to take exhibitors and guests from Lot B to the front of the American Royal complex.

## *Thank you*

Safety is our top priority; we thank you for your cooperation and understanding as we establish procedures to assist in keeping both horses and humans safe under possible emergency conditions.





Richfield Video Productions is honored to again be the official videographer for the American Royal Horse Show!

Reservations can be placed online at [richfieldvideo.com](http://richfieldvideo.com) or contact us by email at [rvprod@gmail.com](mailto:rvprod@gmail.com)



**SEE YOU AT THE SHOW!**

Give us a call today!

502.664.0880 - 502.664.0870

---

# *Advertising and Sponsorship Opportunities*

---

## **UPHA AMERICAN ROYAL NATIONAL CHAMPIONSHIP WEBCAST**

Produced by Richfield Video

Over 200,000 hits through the course of the week \* Over 9,000 computers streaming the horse show on Saturday night \* Reaching an estimated 25,000 viewers at one time

### **Sponsorship Packages:**

**PRESENTING SPONSOR – exclusive opportunity - (\$5,000)**

#### **Benefits:**

- o your logo appears at the bottom of the webcast screen as part of the class name graphic throughout the show
- o your banner ad/Stationary Buttons (providing a live link to your website) will appear on the page that directs viewers to the webcast, as well as on any promotional e-blasts about the webcast.
- o 60 second commercial or two (2) 30-second commercials

**POP-UP SPONSOR – (\$300)**

#### **Benefits:**

- o Opportunity to have a **Pop-Up Ad** (specifically, a 10-15 second slate with your logo that will come up in downtime 3-4 times during a webcast session, i.e., during a drag, during a time out, in the pre-roll, etc.) in the frame of the webcast screen throughout the week

### **Advertising Opportunities:**

**COMMERCIALS – “Run Ready” and they will be produced at least one time per session on the webcast and on close circuit video in the stabling area and in Hale arena 30 minutes prior to the start of the show**

- 30 second video: \$500
- 60 second video: \$1,000

*Interested? Contact: Nancy Becker*

[nbecker@uphaonline.com](mailto:nbecker@uphaonline.com)

*Technical Questions? Richfield Video - RH Bennett*

Phone: 502.664.0880

[rvproad@gmail.com](mailto:rvproad@gmail.com) or [rbennett57@mae.com](mailto:rbennett57@mae.com)

# UPHA Trainer's Incentive Purse

*Show to Win!*

\$250 to a randomly drawn trainer in each championship/stake held during the matinee sessions beginning Wednesday.

\$500 to a randomly drawn trainer in each Championship/Stake held during the Thursday, Friday and Saturday evening sessions.

## **To be eligible:**

Must sign entry blank as trainer.

Must have completed and signed a w9 form in the horse show office prior to the first session in which you compete.

Entry must be entered, shown and judged in eligible championship/stake class.



---

# Rules and Regulations

---

**USEF MEMBERSHIP AND AMATEUR CARDS:** COPIES OF USEF MEMBERSHIP CARDS AND AMATEUR CARDS MUST BE SENT WITH ENTRIES. All participants (rider, driver, handler, owner, trainer, agent or lessee) must present to the competition secretary a current USEF membership card or copy thereof. Every person who has reached their 18<sup>th</sup> birthday and competes in classes for amateurs under USEF rules must possess a current year Amateur Card issued by USEF.

**UPHA MEMBERSHIP CARDS:** COPIES OF UPHA MEMBERSHIP CARDS: All participants (rider, driver, handler, owner, trainer) must present to the competition secretary a current UPHA membership card or copy. (Exhibitors showing in only Missouri-Kansas-Iowa classes and/or the Missouri Breeders Challenge are not required to be members of UPHA.)

**ASHBA MEMBERSHIP CARDS:** COPIES OF ASHBA MEMBERSHIP CARDS: All owners and trainers of horses participating in all saddlebred must present to the competition secretary a current ASHBA membership card or copy.

**ALCOHOL:** Outside alcohol is prohibited at all times within the American Royal Complex.

---

## ARRIVAL TIMES

<u>HORSES STABLED IN:</u>	<u>ARRIVAL TIME:</u>
Upper American Royal Building	8:00 am, Fri., Nov. 4
Governors Building	10:00 am, Fri., Nov. 4
Lower American Royal Building	12:00 noon, Fri., Nov. 4

For advanced bedding orders, call Kent A. Moeller (804) 363-3085

## DEPARTURE TIME: 10:00 AM SUNDAY, NOVEMBER 13<sup>TH</sup>

Tack Taxi will end promptly at 10:00 PM, Saturday November 11<sup>th</sup>.  
Please plan accordingly.

---

**ARENA DIMENSIONS:** Hale Arena - 110 x 225

**CAMPER AND MOBILE HOME SPACE:** Reservations to be made through the American Royal Website at: [www.americanroyal.com](http://www.americanroyal.com). Limited space is available. Electric hook-up, only. No sewer or water.

**COMBINATION, CANCELLATION OR SPLITTING OF CLASSES:** Management reserves the right to cancel or combine any class having less than five (5) entries. Large classes will be split at the discretion of management and class splits will be posted in the show office one (1) hour before the session. If a class is split, management may limit the number of competitors that may enter the corresponding championship or stake.

**COURTESY:** Any discourteous act on the part of an owner, exhibitor, groom, trainer, or agent made toward judges, officials or staff will disqualify their entry and forfeit all fees and premiums. The Steering Committee shall have full power to act in issuing a ruling in such cases. Should the act justify it, the Horse Show Committee shall have power to exclude offender(s) from competition and remove them from the show grounds without being held liable for damages of any kind and this shall be accepted as a condition of entry.

**DOGS:** Dogs are not allowed in Hale Arena, Tom Bass or Scott Pavilion. Dogs in stable area must be on a leash.

**DRESS CODE:** The following dress code has been adopted and will apply to all trainers, handlers, grooms and other participants entering the show ring: 1. Collared shirts are required; stable names and logos are acceptable; 2. Shirts must be tucked in while in the show ring; 3. Slacks or khaki pants only (no denim nor shorts); 4. Billed hats must be worn forward.

**ENTRIES:** *ENTRIES CLOSE OCTOBER 9, 2023.* Entries must be on an American Royal Horse Show Entry Form signed by the exhibitor, rider, driver, handler and trainer or his/her agent(s). In the case the exhibitor, rider, driver or handler is under the age of 18, his/her parent or guardian, or if not available, the trainer, must sign an entry blank on the minor's behalf. Entries can be made at [www.horseshowsonline.com](http://www.horseshowsonline.com).

**FEES:** All fees, including entry and UPHA nominating fees must be paid in full and accompany entry form. Postdated checks are not accepted. Credit cards will be accepted (see entry form.) During the show, an open check **MUST** be left in the office for additional entry fees and charges made during the show. A \$100.00 fee will be charged for all returned checks. If a returned check has not been taken care of within two (2) weeks after notification, your name will be submitted to USEF.



**POST ENTRIES:** Post Entries will be accepted. Entries postmarked after October 9, 2023, and accepted by the Steering Committee, will be charged a LATE FEE of \$50.00 per horse. ENTRIES WILL NOT BE ACCEPTED AFTER OCTOBER 30<sup>th</sup> POSTMARK UNLESS STALLS ARE AVAILABLE. Any horse entered by November 2<sup>nd</sup>, 2023, may be entered in additional classes by paying the appropriate entry fee.

OPEN CHECKS MAILED WITH ENTRY FORMS WILL BE PROCESSED FOR THE AMOUNT OF FEES DUE AT THE TIME OF ENTRY.

**ADD/SCRATCH:** Classes must be officially added and/or scratched in the show office at least one hour prior to the start of the session in which that class is held. FAILURE to properly ADD classes will result in the entry being charged a \$25 PENALTY. FAILURE to properly SCRATCH classes will result in the entry being charged a \$50 PENALTY. If a problem arises immediately before an entry is to show, in order to avoid the penalty, the PADDOCK MUST BE INFORMED of the entry's inability to show.

**CHAMPIONSHIP CLASSES:** Must be officially entered either on the entry blank or in the show office at least one hour prior to the start of the session in which that class is held. **NO DECLARATION IS NECESSARY.** EXCEPTION: FIVE-GAITED, THREE-GAITED, FINE HARNESS NATIONAL CHAMPIONSHIP CLASSES. THESE THREE CLASSES MUST EITHER OFFICIALLY DECLARE OR SCRATCH BY 4:00 P.M. THE DAY OF THE CLASS. Entry fees of Championship classes (unless otherwise noted) will be refunded if properly scratched; **we want you in the program.** Add/Scratch penalties apply.

**SUBSTITUTE HORSES:** A new horse may be substituted for a horse already entered which is unable to attend. A new entry form must be submitted; no additional stalls may be added without checking on availability. An additional office fee will be required to process the substitution.

**MISSOURI/KANSAS/IOWA RULE:** Horses must be owned by a Missouri, Iowa, or Kansas resident and must have shown at three Missouri, Iowa, or Kansas shows, with a total of six classes.

**FAMILY RESTROOMS:** Family restrooms can be located in the Wagstaff Theatre entrance off of Grand Hall.

**FOOTING:** American Royal footing has been screened and sifted and will be top dressed in sawdust in Hale, Scott and Tom Bass arenas.

**FEED AND BEDDING:** Feed, grain, hay, straw and shavings may be purchased from the feed department. Orders must be placed between 7:00 a.m. and 5:00 p.m. Arrangements must be made in advance for late arrival. For advanced bedding orders, please call Kent A. Moeller (804) 363-3085

**RENT A STALL MAT:** Stall mat rentals, disinfecting, and pre-bedding services may be purchased from Elite Stall Mat Rentals. For advanced orders and more information, [www.stallmatrentals.com](http://www.stallmatrentals.com) Phone: 855-628-7200



MANAGEMENT RESERVES THE RIGHT TO CANCEL EVENTS AND TO CHANGE SCHEDULING OR OFFICIALS WHERE NECESSARY DUE TO UNFORESEEN CIRCUMSTANCES.

**THE UPHA/AMERICAN ROYAL HORSE SHOW IS RECOGNIZED BY THE FOLLOWING ORGANIZATIONS:**

**NATIONAL ORGANIZATIONS:**

- American Saddlebred Horse and Breeders Association (ASHBA)
- Saddlebred Record
- Saddlebred Select
- United Professional Horsemen's Association (UPHA)
- United States Equestrian Federation (USEF)

**LOCAL ORGANIZATIONS:**

- Missouri Horse Shows Association (MHSA)
- Pony Express Horse Show Circuit (PEHSC)

**NOVEMBER 6-11, 2023**

Entries Close October 9, 2023

## GROUNDS ADMISSION

### **BARN PASS - \$20.00**

Each barn will be able to purchase up to (2) Barn Passes that will have access to Lot A. All other vehicles must park in Lot B.

### **VEHICLE PASS - \$20.00**

Enables exhibitor to park in Parking Lot B.

### **SINGLE PARKING ADMISSION TO LOT B - \$5.00**

### **EXHIBITOR'S BADGE - \$30.00**

Badge entitles exhibitor to admittance to the grounds of the American Royal Complex including seats in Hale Arena for all performances of the Horse Show as long as seats are available. Badge will also serve as admittance to the Club. Badges, Vehicle Passes, and Barn Passes may be ordered on entry forms and picked up at the Horse Show Office upon arrival. They may also be purchased before move in between the hours of 8:30 a.m. and 5:00 p.m. at the American Royal Office. Badges will serve as season Grounds Passes.

---

**HEALTH REQUIREMENTS:** All horses must have a negative Coggins test performed within 12 months of the show. All horses must have current health papers issued within 30 days of the show. The EIA test information must be completely recorded on the health certificate.

### **HEALTH PAPERS AND COGGINS PAPERS MUST ARRIVE WITH THE HORSES.**

### **HEALTH PAPERS MUST BE PRESENTED TO THE CHECK IN TRAILER TO PICK UP BACK NUMBERS.**

Upon arrival, each horse must be listed on an Event Participation Declaration. This document must be brought to the show office with health papers to pick up back numbers. The Event Participation Declaration can be found at [www.americanroyal.com](http://www.americanroyal.com), or picked up in the horse show office.

GR845 Equine Vaccination Rule 1. At Federation licensed competitions horses, more than 7 months of age, entering the grounds must be accompanied by documentation of Equine Influenza Virus and Equine Herpes Virus (Rhinopneumonitis) vaccinations within six months prior to entering the stables. Horses not in compliance with this rule may be required to leave the competition grounds upon request by Competition Management. Documentation should consist of one of the following methods mentioned below. The frequency of vaccine administration should be per the vaccine manufacturers' or veterinarian's recommendations. It is recommended that vaccines are administered by or under the direction of a veterinarian. 2. In the case of vaccines administered by a veterinarian, the exhibitor, upon request by Competition Management, must provide documentation from the veterinarian on documenting that the horse in question received the vaccinations; name of the vaccines and date of vaccine administration. 3. In the case of vaccines administered by a person other than a veterinarian, the exhibitor, upon request by Competition Management, must provide a receipt of the vaccine purchase which is signed by the owner, or agent with care, custody, and control of the horse; name, serial number and expiration date of the vaccine; and date of vaccine administration. 4. In the case of a horse that is unable to receive either of the vaccinations due to a history of adverse reactions, the exhibitor, upon request by Competition Management, must provide a letter from the veterinarian on official letterhead stating that the horse in question cannot be vaccinated due to medical concerns and a log of temperatures taken twice daily for the seven days prior to entering the competition grounds. These horses must also have their temperature taken and logged twice daily while on the competition grounds. The log of temperatures should be provided to the Competition Management, steward, or technical delegate when requested. 5. Competition Management may not amend or enhance vaccination requirements without prior approval of the Veterinary Committee.

**JUDGING:** Competition involving three judges will be tabulated by the Majority Opinion System. Management reserves the right to substitute judges if necessary. UPHA Equitation Classes will also be tabulated by the MOS System.

**MINORS:** Minors who do not have a valid driver's license which allows them to operate a motorized vehicle in the state in which they reside will not be permitted to operate a motorized vehicle of any kind, including, but not limited to, golf carts, motorcycles, scooters, or farm utility vehicles, on the competition grounds of licensed competitions. Minors who have a valid temporary license may operate the above-described motorized vehicles as long as they are accompanied by an adult with a valid driver's license. The parent/legal guardian or individual who signs the entry blank as a parent or guardian of a minor operating a motorized vehicle in violation of this rule are solely responsible for any damages, claims, losses or actions resulting from that operation. Violations of this rule will be cause for penalties against those responsible for the child committing the offense. Wheelchairs and other mobility assistance devices for individuals with disabilities are exempt from this rule. The unsafe use of personal electronic transport devices, as determined by the competition officials and management in their sole discretion, which do not require a driver's license to operate, including but not limited to segways, hover boards, and single wheeled scooters is prohibited on competition grounds. Operating such devices in areas where people gather may be deemed "unsafe use" if there is a risk of harm to others. If the operator of the device is a minor, the parent/legal guardian or individual who signs the entry blank as a parent or guardian of a minor operating the device in violation of this rule is accountable and may be subject to penalties. Wheelchairs and other mobility assistance devices for individuals with disabilities are exempt from this rule.

**PARENTS:** If not accompanying a minor, please send written authorization for medical treatment (responsibility for care) with trainer or responsible adult.

**PRIZE MONEY:** Prize money will not be mailed unless the Social Security Number is listed on the entry blank.

Prize monies will be mailed no later than 30 days following the final day of the show.

## PRIZE MONEY DISTRIBUTION

Purse	\$12,000.00	\$10,000.00	\$7,500.00	\$2,000.00	\$1,000.00	\$400.00
1st	\$ 3,000.00	\$ 2,500.00	\$ 1,875.00	\$ 500.00	\$ 250.00	\$ 100.00
2nd	\$ 2,400.00	\$ 2,000.00	\$ 1,500.00	\$ 400.00	\$ 200.00	\$ 80.00
3rd	\$ 1,800.00	\$ 1,500.00	\$ 1,125.00	\$ 300.00	\$ 150.00	\$ 60.00
4th	\$ 1,200.00	\$ 1,000.00	\$ 750.00	\$ 200.00	\$ 100.00	\$ 40.00
5th	\$ 1,020.00	\$ 850.00	\$ 637.50	\$ 170.00	\$ 85.00	\$ 34.00
6th	\$ 960.00	\$ 800.00	\$ 600.00	\$ 160.00	\$ 80.00	\$ 32.00
7th	\$ 900.00	\$ 750.00	\$ 562.50	\$ 150.00	\$ 75.00	\$ 30.00
8th	\$ 720.00	\$ 600.00	\$ 450.00	\$ 120.00	\$ 60.00	\$ 24.00
Entry	\$ 700.00	\$ 600.00	\$ 500.00	\$ 250.00	\$ 125.00	\$ 45.00

**REFUNDS:** Requests for refunds must be received in the Horse Show Office with a veterinarian certificate. Entry fees minus a \$40.00 vet-out fee may be refunded. No refunds on stalls, bedding, parking, offices fees, or nomination fees (where applicable). The amount to be refunded may not be used as a credit toward a future event.

**REGISTRATION PAPERS:** Hackney/Harness/Roadster Ponies, American Saddlebreds and Roadster Horses: a copy of registration papers showing proof of ownership must be submitted with entry form at time of making entry.

**RIDER'S AGE:** For Horse Show Office purposes, please be sure to show age of rider, as of 12/01/2022, on entry form.

**RING CONDUCT:** Riders/Drivers and attendants must be properly attired during all classes. During the time of judging, no persons will be allowed in the ring except the required officials. **MANAGEMENT STRONGLY RECOMMENDS ALL ATTENDANTS BE SUITABLY DRESSED WHEN ENTERING THE RING, HEADING A HORSE OR PRESENTING IN A CHAMPIONSHIP CLASS.**

**SAFE SPORT:** All USEF Life and Senior Active members, as well as participants who have regular contact with minor athletes, are required to comply with the U.S. Center for SafeSport training requirement to be eligible to participate in the competition. All participants must adhere to the U.S. Center for SafeSport Code, USEF Safe Sport Policy, and the Minor Athlete Abuse Prevention Policies. More information about these can be found at [www.usef.org](http://www.usef.org).

**SHARPS DISPOSAL:** There will be one container per fifty occupied stalls for the disposal of needles and other disposable sharp instruments in convenient locations in barns housing show horses. Competition management will replace such containers when full and dispose of them properly. Competition management may fine any individuals including trainers, owners, exhibitors or their agents up to \$100 for improper disposal of needles or other sharp instruments.

**SHOW OFFICE:** The Show Office closes one hour before the start of each session (except during the 8:00 a.m. session) in order to prepare for the session. The Show Office also closes one-half hour after the completion of the evening sessions.

**STABLING:** All entries must have a stall. **Only entries exhibiting at this show are to be stabled on the grounds.** Stalls are of a permanent and portable type with doors with cement flooring. Entries will be accepted on a "First Come, First Served" basis according to the availability of stabling. Bedding is not included; it may be purchased upon arrival. If stalling falls to include poles, they will be priced at \$150 as a discount. **Due to the limited number of stalls available, management reserves the right to limit the number of tack stalls per stable.**

### BOX STALLS/TACK STALLS - \$200.00

- ONLY WHOLE STALLS MAY BE ORDERED AND PAID FOR ON THE ENTRY FORM.
- Stalls may not be sold or given away; any stall transaction must go through the Horse Show Office.
- Exhibitors stabled in the Governors Exhibition Hall and Lower Exhibition Hall are requested to not dismantle their stall decorations until the conclusion of the show on Saturday evening.
- Damage to stalls is at owner's expense.



- A portion of each box stall/tack stall fee will be used in funding a portion of the prize money for the Classics.

**SIGNAGE AND DECORATIONS:** There is no signage allowed outside your assigned exhibitor space. Decorations, signs, posters, etc., may not be taped, nailed, tacked, or otherwise fastened to ceilings, painted surfaces, columns, glass doors, marble, fabric, walls, etc. Approved tape 3M 9589 (double side adhesive), 3M 471 (single side adhesive) and Gaffers tapes are the only approved products for booth markings and carpet applications within the facility. Applied tapes and any residue must be removed from all surfaces prior to move-out. Paint, shoe polish and unapproved tapes are not allowed to be used in the facility. No drilling of the structure is allowed. Any means of attachment must be non-destructive to the structure. Helium balloons are not allowed inside the facility. Glitter and adhesive-backed decals are not permitted in the facility or on the premises. All labor requirements for move-in/out, setup of display areas, etc. shall be the responsibility of show management and/or exhibitors and their service providers.

**STALL CLEAN UP FEE:** Any decorations and stall fronts left behind will incur a \$150 clean up fee. All decorations and stall fronts must be removed upon leaving the facility. Show management has the right to invoice any exhibitor, trainer, or barn for additional clean up associated with decorations.

**TIME OUTS:** In the event a horse/pony throws a shoe in the warm-up area, a 5-minute Time Out may be taken to replace the shoe in the warmup area. The USEF-5-minute Time Out allowed in the ring would then be voided and no other time out would be available for that entry. This rule does not affect any other USEF time out rule.

**TRAINING AIDS:** Whips longer than six (6) feet are not allowed at ringside or warm-up areas. Explosives and fire extinguishers used as training aids are prohibited on the show grounds before, during or after the show. Fire extinguishers will be confiscated, and offenders will be reported to USEF.

**No attention-getting devices allowed in warm-up ring or show ring.  
Lash whips are not permitted on victory passes.**

**TROPHIES:** All memorial, perpetual and challenge trophies will remain in the possession of the American Royal.

**TRUCK AND TRAILER PARKING:** Exhibitors enter through the **Livestock Gate** on the west side of the American Royal Building (southwest corner of complex). **To access the Livestock Gate, turn right onto State Line Road instead of turning left into the Lot A Gate from American Royal Drive. Follow State Line Road around the viaduct until reaching the Livestock Gate. All health papers including Equine Event Participation Declaration, negative Coggins, and 30-day health certificate must be presented at the check in trailer before entrance into the facility. All trailers without paperwork will be asked to pull into a holding area or asked to leave until health papers are presented. After unloading, all trailers are to be parked in a designated area in Lot-A. Violators will be towed. Parking is not permitted under the viaduct.**

**VENDORS:** If you wish to sell goods or services at the American Royal, you must register as a vendor through the American Royal. Anyone found selling items without the permission of the American Royal or outside of their designated vendor space may be fined an amount 2 times the cost of a standard booth space and asked to leave the property. For more information on becoming a vendor, please contact Sammy Basler at 816-569-4012 or [marketplace@americanroyal.com](mailto:marketplace@americanroyal.com).

---

### **HAVE YOU PRE-ORDERED YOUR FEED ROOM NEEDS?**

Easily split the order between clients and have the order applied to your show bill. Order now, pay later!

**PLEASE CONTACT SHOW MANAGEMENT TO PLACE YOUR ORDER.**

Questions? Contact: Kent A. Moeller  
(804) 363-3085

---

# ASHBA BILL WISE TWO-YEAR-OLD SWEEPSTAKES



The ASHBA Bill Wise Two-Year-Old Sweepstakes Program is designed to enhance the breeding, training and showing of the American Saddlebred.

**Eligibility:** Open to registered American Saddlebred yearlings that have been nominated by June 1 of the yearling year.

**Classes Offered:** Entries in the Two-Year-Old Sweepstakes compete in Fine Harness or Three-Gaited Park.

**Purse Distribution:** The nomination fees received for all horses for the Two-Year-Old Sweepstakes, plus interest, minus expenses, will be divided equally between the two classes. The person who is the recorded owner at the time of

competition will receive one-half of the purse; the person(s) who were owners of record at the time each nomination payment was made will receive equal shares of the remaining one-half of the purse.

**Judging:** The Two-Year-Old Sweepstakes classes are conducted under the rules of the United States Equestrian Federation (USEF).

The ASHBA Bill Wise Sweepstakes Program has paid out more than \$5 million in prize money to owners, breeders and/or nominators.

For more information on ASHBA Prize Programs, contact Patricia Edwards at 859.259.3899 or [p.edwards@saddlebred.com](mailto:p.edwards@saddlebred.com)



American Saddlebred Horse and Breeders Association  
4083 Wing Commander Way, Suite 50  
Lexington, KY 40511  
(859) 259-2742  
[info@saddlebred.com](mailto:info@saddlebred.com)

---

# The UPHA American Royal National Championship

---

## TENTATIVE SCHEDULE

*Management reserves the right to change the class schedule due to unforeseen circumstances.*

### **SUNDAY, NOVEMBER 5 - 11:00 A.M.**

Trainers' Meeting – Location TBD

### **SUNDAY, NOVEMBER 5 – 4:00 P.M. TO 5:00 P.M.**

Hale Arena reserved for 1 hour for Exceptional Challenge Cup (Unassisted) Riders

### **MONDAY, NOVEMBER 6 - 9:00 A. M.**

Measure Ponies

1 UPHA Exceptional Challenge Cup National Championship-Phase I

### **MONDAY, NOVEMBER 6 - 11:00 A.M.**

- 2 Missouri-Kansas-Iowa Fine Harness
- 3 Three-Year-Old Park Horse
- 4 Adult Equitation
- 5 Missouri-Kansas Equitation, 17 & under
- 6 Country Pleasure Driving
- 7 Three-Year-Old Park Pleasure
- 8 Three Gaited Country Pleasure, Adult Exhibitor 18 & over
- 9 Missouri-Kansas-Iowa Road Pony
- 10 Five Gaited Show Pleasure, 18 to 38 years of age
- 11 Three Gaited Park Pleasure, Junior Horse
- 12 Missouri-Kansas-Iowa Three Gaited Amateur/Junior Exhibitor
- 13 Veteran Show Pleasure Horse
- 14 Three-Year-Old Fine Harness
- 15 ASB Hunter Country Pleasure, 18 & Over
- 16 Missouri-Kansas-Iowa Three Gaited Country Pleasure, Amateur or Junior Exhibitor
- 17 Five Gaited Show Pleasure, 39 years of age & older
- 18 Country Pleasure Five Gaited
- 19 Missouri-Kansas-Iowa Open Five Gaited

30 minutes following last class, Hale Arena reserved for 1 hour for Exceptional Challenge Cup riders competing in Class 38: UPHA Exceptional Challenge Cup Walk & Trot with Assistance National Championship

### **MONDAY, NOVEMBER 6 - 6:30 P.M.**

- 20 Open Fine Harness
- 21 Missouri-Kansas-Iowa Open Three Gaited
- 22 UPHA Exceptional Challenge Cup National Championship - Phase II
- 23 Open Three Gaited, over 15.2 Hands
- 24 Amateur Harness Pony
- 25 Missouri-Kansas-Iowa Three Gaited Show Pleasure, Junior Exhibitor
- 26 Three-Year-Old Three Gaited
- 27 Amateur Three-Gaited Park
- 28 Open Five Gaited Mares
- 29 Amateur Three Gaited, 15.2 & under

- 30 Missouri-Kansas-Iowa Three Gaited Park
- 31 Three-Year-Old Five Gaited
- 32 Amateur Road Horse to Bike
- 33 Missouri-Kansas-Iowa Three Gaited Show Pleasure, 18 & over
- 34 Ladies Amateur Three Gaited
- 35 Three Gaited Park Open
- 36 Amateur Hackney Pony
- 37 Will Shriver Five Gaited Stallion Open

**TUESDAY, NOVEMBER 7 – 9:00 A.M.**

- 38 UPHA Exceptional Challenge Cup Walk & Trot with Assistance National Championship- Phase I

**30 MINUTE BREAK (NOT TO START BEFORE 11AM)**

- 39 Fine Harness Two-Year-Old
- 40 Amateur Five Gaited Mares
- 41 Three Gaited Show Pleasure, 18 to 38 years of age
- 42 Missouri-Kansas-Iowa Five Gaited Show Pleasure Amateur or Junior Exhibitor
- 43 Ladies Three Gaited, under 15.2
- 44 Three Gaited Two-Year-Old
- 45 Three Gaited Show Pleasure, 39 & over years of age
- 46 Fine Harness Junior Horse
- 47 Open Roadster Horse Under Saddle
- 48 Open Three-Gaited Park Pleasure
- 49 Open Harness Pony
- 50 Five Gaited Two-Year-Old
- 51 Amateur Three Gaited, over 15.2
- 52 Three Gaited Park, Junior Horse
- 53 Show Pleasure Driving, Amateur

**TUESDAY, NOVEMBER 7 - 1:00 P.M.**

UPHA Equitation Committee Meeting – Governors Room (2<sup>nd</sup> floor American Royal offices)

**TUESDAY, NOVEMBER 7 – 6:30 P.M.**

- 54 Amateur Fine Harness
- 55 Missouri-Kansas-Iowa Five Gaited Amateur or Junior Exhibitor
- 56 Ladies Five Gaited Mares
- 57 Open Road Pony
- 58 ASB Western Country Pleasure
- 59 UPHA Exceptional Challenge Cup National Championship -Walk & Trot with Assistance-Phase II
- 60 Ladies Fine Harness
- 61 Open Three Gaited, 15.2 & under
- 62 Amateur Road Pony
- 63 Ladies Five Gaited Geldings, 18 & Over
- 64 Junior Three Gaited Horse
- 65 ASB Hunter Country Pleasure, Junior Exhibitor 17 & under
- 66 Amateur Five Gaited Stallions & Geldings
- 67 Ladies Three Gaited, over 15.2
- 68 Open Road Horse to Bike
- 69 Open Five Gaited Geldings

**WEDNESDAY, NOVEMBER 8 - 9:00 A.M.**

- 70 UPHA Junior Challenge Cup National Championship, Phase I
- 71 UPHA Exceptional Challenge Cup Qualifying Class (Qualifier 2024)
- 72 UPHA Exceptional Challenge Cup Walk & Trot with Assistance Qualifying Class (Qualifier 2024)

### **30 MINUTE BREAK (NOT TO START BEFORE 11AM)**

- 73 Hackney Pleasure Driving, 18 & over
- 74 Walk & Trot Show Pleasure, Junior Exhibitor 12 & under
- 75 Ladies Western Pleasure
- 76 Three Gaited Country Pleasure, Junior Exhibitor 13 & under
- 77 Missouri-Kansas-Iowa Three Gaited Country Pleasure Stake
- 78 Show Pleasure Driving, Junior Exhibitor 17 & Under
- 79 **Veteran Show Pleasure Horse National Championship**
- 80 Three Gaited Show Pleasure, Junior Exhibitor 13 & under
- 81 Five Gaited Pony
- 82 Three Gaited Country Pleasure, Junior Exhibitor 14-17
- 83 Missouri-Kansas-Iowa Three Gaited Show Pleasure Championship
- 84 Three Gaited Pony
- 85 Hackney Pleasure Driving, Junior Exhibitor 17 & under
- 86 Three Gaited Show Pleasure, Junior Exhibitor 14-17
- 87 **UPHA Adult Challenge Cup National Championship**

### **WEDNESDAY, NOVEMBER 8 - 6:30 P.M.**

- 88 ASHBA Bill Wise Two-Year-Old Fine Harness Sweepstakes
- 89 Missouri-Kansas-Iowa Three Gaited Park Stake
- 90 Three Gaited Junior Exhibitor 14-17
- 91 Ladies Amateur Five Gaited
- 92 **UPHA Junior Challenge Cup National Championship – Phase II**
- 93 ASHBA Bill Wise Two-Year-Old Three-Gaited Park Sweepstakes
- 94 Five Gaited Junior Exhibitor, 14-17
- 95 **Country Pleasure Driving National Championship**
- 96 Road Pony Under Saddle, Junior Exhibitor 17 & under
- 97 **Country Hunter Pleasure National Championship**
- 98 Three Gaited Junior Exhibitor 13 & under
- 99 Open Parade Horse
- 100 Open Hackney Pony
- 101 Three Gaited Park Horse, Junior Exhibitor 17 & under
- 102 The Standardbred Roadster 100
- 103 Junior Five Gaited

## **JUNIOR EXHIBITORS – WE WANT YOU!**

---

The American Royal and BOTAR Organization will award two \$1,500 scholarships.  
Open to Junior Exhibitors of any age!

**Application requirements:** Applications must include application form, school transcript, one letter of recommendation and a one-page essay written by the applicant on what their participation in the UPHA/American Royal National Championship Horse Show means to them.

**Deadline:** Applications must be received by October 19  
Visit the American Royal website for the application form online at  
[www.americanroyal.com/equine/national-championship](http://www.americanroyal.com/equine/national-championship)



Questions? Contact: [equine@americanroyal.com](mailto:equine@americanroyal.com) or 816-569-4046  
Applications Due: October 19

---

## **THURSDAY, NOVEMBER 9 - 9:00 A.M.**

104 UPHA Senior National Challenge Cup Championship - Phase I

### **30 MINUTE BREAK, (NOT TO START BEFORE 11AM)**

- 105 Five Gaited Junior Exhibitor 13 & under
- 106 Country Five Gaited National Championship
- 107 Walk & Trot Show Pleasure National Championship, 12 & under
- 108 Western Country Pleasure National Championship
- 109 Hackney Pleasure Horse or Pony Under Saddle Junior Exhibitor 17 & under
- 110 Missouri-Kansas-Iowa Three Gaited Open Stake
- 111 Five Gaited Show Pleasure, Junior Exhibitor 17 & under
- 112 Roadster to Wagon
- 113 Equitation 13 & under
- 114 Open Three-Gaited Park Pleasure National Championship
- 115 Roadster Pony to Bike Junior Exhibitor 17 & under
- 116 Adult Three Gaited Country Pleasure National Championship
- 117 Missouri-Kansas-Iowa Five Gaited Amateur/Junior Exhibitor Stake
- 118 AHHS Youth Medallion National Championship Hackney/Harness Pony
- 119 Missouri-Kansas-Iowa Three Gaited Amateur/Junior Exhibitor Stake
- 120 Adult Five Gaited Show Pleasure National Championship

## **THURSDAY, NOVEMBER 9 - 6:30 P.M.**

- 121 UPHA Fine Harness Classic Grand Championship
- 122 UPHA Hackney Pony Classic Grand Championship
- 123 UPHA Park Pleasure Classic Grand Championship
- 124 UPHA Hackney Pony Park Pleasure Driving Classic Grand Championship
- 125 UPHA Park Horse Classic Grand Championship
- 126 UPHA Senior Challenge Cup National Championship - Phase II
- 127 UPHA Harness Pony Classic Grand Championship
- 128 UPHA Three Gaited Classic Grand Championship
- 129 UPHA Roadster Horse Classic Grand Championship
- 130 UPHA Roadster Pony Classic Grand Championship
- 131 UPHA Five Gaited Classic Grand Championship

## **FRIDAY, NOVEMBER 10 - 9:00 A.M.**

- 132 UPHA 10 & Under Walk/Trot National Challenge Cup- Phase I
- 133 AHHS Youth Medallion National Championship, Showmanship In-Hand

### **30 MINUTE BREAK (NOT TO START BEFORE 11AM)**

- 134 Three Gaited Pony National Championship
- 135 Equitation 16 & 17 years of age
- 136 Missouri-Kansas-Iowa Five Gaited Show Pleasure Championship
- 137 AHHS Youth Medallion Show Pleasure Driving National Championship, 17 & under
- 138 Park Pleasure Junior Horse National Championship
- 139 Junior Equitation National Championship 13 & under
- 140 Equitation, 14 & 15 Years of Age
- 141 Amateur Show Pleasure Driving National Championship
- 142 Three Gaited Show Pleasure National Championship 13 & under
- 143 Three Gaited Country Pleasure National Championship 14-17
- 144 Roadster Under Saddle National Championship
- 145 Five Gaited Pony National Championship
- 146 Three Gaited Country Pleasure National Championship 13 & Under
- 147 UPHA 10 and Under Walk/Trot National Challenge Cup Championship - Phase II
- 148 USEF Saddle Seat Adult Amateur Medal National Final

## **FRIDAY, NOVEMBER 10 - 6:30 P.M.**

### **OPENING CEREMONIES**

- 149 American Royal Senior Equitation National Championship, 14-17 years of age
- 150 Ladies Amateur Three-Gaited National Stake
- 151 Amateur Fine Harness National Championship
- 152 AHHS Youth Medallion Roadster Pony Under Saddle National Championship
- 153 Ladies Fine Harness National Championship
- 154 Open Parade Horse National Championship
- 155 Amateur Harness Pony National Championship
- 156 Amateur Three-Gaited National Stake
- 157 Adult Three Gaited Show Pleasure National Championship
- 158 Amateur Roadster Pony to Bike National Championship
- 159 Missouri-Kansas-Iowa Tom Bass Memorial Five Gaited Stake
- 160 Amateur Roadster Horse to Bike National Championship
- 161 Amateur Park Horse National Championship
- 162 Amateur Hackney Pony National Championship
- 163 Ladies Five Gaited National Stake

## **SATURDAY, NOVEMBER 11 - 9:00 A.M.**

- 164 USEF Saddle Seat Medal-Preliminary

### **30 MINUTE BREAK (NOT TO START BEFORE 11AM)**

### **OPENING CEREMONIES**

- 165 Junior Exhibitor Show Pleasure Driving National Championship
- 166 UPHA, Walk-Trot Challenge Cup 10 & under, (Qualifier 2024)
- 167 AHHS Youth Medallion Roadster Pony to Bike National Championship, 14-17
- 168 Five Gaited Show Pleasure National Championship, 17 & Under
- 169 AHHS Youth Medallion Pleasure Horse or Pony Under Saddle National Championship
- 170 Junior Exhibitor Three Gaited Park National Championship
- 171 Hackney Pony National Championship
- 172 Five Gaited Junior Exhibitor National Championship, 13 & Under
- 173 Three Gaited Show Pleasure National Championship, 14-17
- 174 Saddle Seat Equitation WTC 10 & Under
- 175 AHHS Youth Medallion Roadster Pony to Bike National Championship, 13 & under
- 176 USEF Saddle Seat Medal National Final

## **SATURDAY, NOVEMBER 11 - 6:30 P.M.**

### **STAKE NIGHT**

### **OPENING CEREMONIES**

### **EQUITATION WINNERS PRESENTATION**

- 177 Fine Harness National Championship
- 178 Ladies Amateur Five Gaited National Stake
- 179 Harness Pony National Championship
- 180 Junior Exhibitor Three Gaited National Championship, 14-17
- 181 Ladies Three Gaited National Stake
- 182 Roadster to Wagon National Championship
- 183 Amateur Five Gaited National Stake
- 184 Hackney Show Pleasure Driving National Championship
- 185 Junior Exhibitor Five Gaited National Championship, 14-17
- 186 Three Gaited National Championship
- 187 Roadster Horse National Championship
- 188 Junior Exhibitor Three Gaited National Championship, 13 & under
- 189 Three Gaited Park National Championship
- 190 Roadster Pony National Championship
- 191 Five Gaited National Championship





# WAIVER AND RELEASE OF LIABILITY, ASSUMPTION OF RISK AND INDEMNITY AGREEMENT

For and in consideration of United States Equestrian Federation, Inc. dba US Equestrian ("USEF") allowing me, the undersigned, to participate in any capacity (including as a rider, driver, handler, vaulter, longeur, lessee, owner, agent, coach, official, trainer or volunteer) in a USEF sanctioned, licensed or approved event or activity, including but not limited to equestrian clinics, practices, shows, competitions and related or incidental activities and \_\_\_\_\_ ("USEF Event" or "USEF Events"); I, for myself, and on behalf of my spouse, children, heirs and next of kin, and any legal and personal representatives, executors, administrators, successors,, and assigns, hereby agree to and make the following contractual representations pursuant to this Agreement (the "Agreement"):

A. RULES AND REGULATIONS: I hereby agree that I have read, understand, and agree to be bound by all applicable Federation Bylaws, rules, and policies including the USEF Safe Sport Policy and Minor Athlete Abuse Prevention Policies (MAAPP) as published at www.usef.org, as amended from time to time.

B. ACKNOWLEDGMENT OF RISK: I knowingly, willingly, and voluntarily acknowledge the inherent risks associated with the sport of equestrian and know that horseback riding and related equestrian activities are inherently dangerous, and that participation in any USEF Event involves risks and dangers including, without limitation, the potential for serious bodily injury (including broken bones, head or neck injuries), sickness and disease (including communicable diseases), trauma, pain & suffering, permanent disability, paralysis and death; loss of or damage to personal property (including my mount & equipment) arising out of the unpredictable behavior of horses; exposure to extreme conditions and circumstances; accidents involving other participants, event staff, volunteers or spectators; contact or collision with other participants and horses, natural or manmade objects; adverse weather conditions; facilities issues and premises conditions; failure of protective equipment (including helmets); inadequate safety measures; participants of varying skill levels; situations beyond the immediate control of the USEF Event organizers and competition management; and other undefined, not readily foreseeable and presently unknown risks and dangers ("Risks").

### EQUINE ACTIVITY LIABILITY ACT WARNING:

CAUTION: HORSEBACK RIDING AND EQUINE ACTIVITIES CAN BE DANGEROUS. RIDE AT YOUR OWN RISK.

**Under the laws of most States, an equine activity sponsor or equine professional is not liable for any injury to, or the death of, a participant in equine activities resulting from the inherent risks of equine activities.**

C. ASSUMPTION OF RISK: I understand that the aforementioned Risks may be caused in whole or in part or result directly or indirectly from the negligence of my own actions or inactions, the actions or inactions of others participating in the USEF Events, or the negligent acts or omissions of the Released Parties defined below, and I hereby voluntarily and knowingly assume all such Risks and responsibility for any damages, liabilities, losses, or expenses that I incur as a result of my participation in any USEF Events. I also agree to be responsible for any injury or damage caused by me, my horse, my employees or contractors under my direction and control at any USEF Event.

D. WAIVER AND RELEASE OF LIABILITY, HOLD HARMLESS AND INDEMNITY: In conjunction with my participation in any USEF Event, I hereby release, waive and covenant not to sue, and further agree to indemnify, defend and hold harmless the following parties: USEF, USEF Recognized Affiliate Associations, the United States Olympic & Paralympic Committee (USOPC), USEF clubs, members, Event participants (including athletes/riders, coaches, trainers, judges/officials, and other personnel), the Event owner, licensee, and competition managers; the promoters, sponsors, or advertisers of any USEF Event; any charity or other beneficiary which may benefit from the USEF Event; the owners, managers, or lessors of any facilities or premises where a USEF Event may be held; and all directors, officers, employees, agents, contractors, and volunteers of any of the aforementioned parties (**Individually and Collectively, the "Released Parties" or "Event Organizers"**), with respect to any liability, claim(s), demand(s), cause(s) of action, damage(s), loss, or expense (including court costs and reasonable attorney fees) of any kind or nature ("**Liability**") which may arise out of, result from, or relate in any way to my participation in the USEF Events, including claims for Liability caused in whole or in part by the negligent acts or omissions of the Released Parties.

E. COMPLETE AGREEMENT AND SEVERABILITY CLAUSE: This Agreement represents the complete understanding between the parties regarding these issues and no oral representations, statements or inducements have been made apart from this Agreement. If any provision of this Agreement is held to be unlawful, void, or for any reason unenforceable, then that provision shall be deemed severable from this Agreement and shall not affect the validity and enforceability of any remaining provisions.

**I HAVE CAREFULLY READ THIS DOCUMENT IN ITS ENTIRETY, UNDERSTAND ALL OF ITS TERMS AND CONDITIONS, AND KNOW IT CONTAINS AN ASSUMPTION OF RISK, RELEASE AND WAIVER FROM LIABILITY, AS WELL AS A HOLD HARMLESS AND INDEMNIFICATION OBLIGATIONS.**

By signing below, I (as the participant or as the Parent/Legal Guardian of the minor identified below) hereby accept and agree to the terms and conditions of this Agreement in connection with my (or the minor's) participation in any USEF Event. If, despite this Agreement, I, or anyone on my behalf or the minor's behalf, makes a claim for Liability against any of the Released Parties, I will indemnify, defend and hold harmless each of the Released Parties from any such Liabilities as the result of such claim.

**The parties agree that this agreement may be electronically signed. The parties agree that the electronic signatures appearing on this agreement are the same as handwritten signatures for the purposes of validity, enforceability, and admissibility.**

RIDER/DRIVER/HANDLER/VAULTER/LONGEUR  OWNER  TRAINER  OFFICIAL  STAFF  VOLUNTEER  COACH (IF APPLICABLE)

Signature: \_\_\_\_\_ Date: \_\_\_\_\_

Print Name: \_\_\_\_\_

Parent/Guardian Signature: (Required if Rider/Driver/Handler/Vaulter/Longeur is a minor) \_\_\_\_\_ Date: \_\_\_\_\_

Print Parent//Guardian Name: \_\_\_\_\_ Emergency Contact Phone No. \_\_\_\_\_



**FEDERATION ENTRY AGREEMENT**

By entering a Federation-licensed Competition and signing this entry blank as the Owner, Lessee, Trainer, Manager, Agent, Coach, Driver, Rider, Handler, Vaulteur or Longeur and on behalf of myself and my principals, representatives, employees and agents, I agree that I am subject to the Bylaws and Rules of The United States Equestrian Federation, Inc. (the "Federation") and the local rules of the competition. I agree to be bound by the Bylaws and Rules of the Federation and of the competition. I will accept as final the decision of the Hearing Committee on any question arising under the Rules, and agree to release and hold harmless the competition, the Federation, their officials, directors and employees for any action taken under the Rules. I represent that I am eligible to enter and/or participate under the Rules, and every horse I am entering is eligible as entered. I also agree that as a condition of and in consideration of acceptance of entry, the Federation and/or the Competition may use or assign photographs, videos, audios, cable - casts, broadcasts, internet, film, new media or other likenesses of me and my horse taken during the course of the competition for the promotion, coverage or benefit of the competition, sport, or the Federation. Those likenesses shall not be used to advertise a product and they may not be used in such a way as to jeopardize amateur status. I hereby expressly and irrevocably waive and release any rights in connection with such use, including any claim to compensation, invasion of privacy, right of publicity, or to misappropriation. The construction and application of Federation rules are governed by the laws of the State of New York, and any action instituted against the Federation must be filed in New York State. See GR908.4. EC 9/21/09 Effective 12/1/09

**United States Equestrian Federation, Inc. Entry Agreement**

I have read the United States Equestrian Federation, Inc. (the "Federation") Entry Agreement (GR906.4) as printed in the Prize List for this Competition and agree to all of its provisions. I understand and agree that by entering this Competition, I am subject to Federation Rules, the Prize List, and local rules of the competition. I agree to waive the right to the use of my photos at the competition, and agree that any actions against the Federation must be brought in New York State.

**Release, Assumption of Risk, Waiver and Indemnification**

**This document waives important legal rights. Read it carefully before signing.**

I AGREE in consideration for my participation in this Competition to the following:

I AGREE that the "Federation" and "Competition" as used above includes all of their officials, officers, directors, employees, agents, personnel, volunteers and affiliated organizations.

I AGREE that I choose to participate voluntarily in the Competition with my horse, as a rider, driver, handler, vaulteur, longeur, lessee, owner, agent, coach, trainer, or as parent or guardian of a junior exhibitor. I am fully aware and acknowledge that horse sports and the Competition involve inherent dangerous risks of accident, loss, and serious bodily injury including broken bones, head injuries, trauma, pain, suffering, or death ("Harm").

I AGREE to hold harmless and release the Federation and the Competition from all claims for money damages or otherwise for any Harm to me or my horse and for any Harm of any nature caused by me or my horse to others, even if the Harm arises or results, directly or indirectly, from the negligence of the Federation or the Competition.

I AGREE to expressly assume all risks of Harm to me or my horse, including Harm resulting from the negligence of the Federation or the Competition.

I AGREE to indemnify (that is, to pay any losses, damages, or costs incurred by) the Federation and the Competition and to hold them harmless with respect to claims for Harm to me or my horse, and for claims made by others for any Harm caused by me or my horse while at the Competition.

I have read the Federation Rules about protective equipment, including GR801 and, if applicable, EV114 and I understand that I am entitled to wear protective equipment without penalty, and I acknowledge that the Federation strongly encourages me to do so while WARNING that no protective equipment can guard against all injuries.

If I am a parent or guardian of a junior exhibitor, I consent to the child's participation and AGREE to all of the above provisions and AGREE to assume all of the obligations of this Release on the child's behalf.

I represent that I have the requisite training, coaching and abilities to safely compete in this competition.

I AGREE that if I am injured at this competition, the medical personnel treating my injuries may provide information on my injury and treatment to the Federation on the official USEF accident/injury report form. EC 9/21/09 Effective 12/1/09

**BY SIGNING BELOW, I AGREE to be bound by all applicable Federation Rules and all terms and provisions of this entry blank.**

<b>Rider/Driver/Handler</b> (mandatory)	<b>Owner</b> (mandatory)	<b>Agent Trainer</b> (mandatory)	<b>Coach Vaulteur/Longeur</b> (if applicable)
--	-----------------------------	-------------------------------------	--

Signature: \_\_\_\_\_ Signature: \_\_\_\_\_ Signature: \_\_\_\_\_ Signature: \_\_\_\_\_

Print Name: \_\_\_\_\_ Print Name: \_\_\_\_\_ Print Name: \_\_\_\_\_ Print Name: \_\_\_\_\_

Parent/Guardian Signature: (Required if Rider/Driver/Handler/Vaulteur/Longeur is a minor) \_\_\_\_\_

Print Parent//Guardian Name: \_\_\_\_\_ Emergency Contact Phone No. \_\_\_\_\_

Is Rider/Driver/Vaulteur a U.S. Citizen: \_\_\_ Yes \_\_\_ No



# FEDERATION ENTRY AGREEMENT

By entering a Federation-licensed Competition and signing this entry blank as the Owner, Lessee, Trainer, Manager, Agent, Coach, Driver, Rider, Handler, Vaultler or Longeur and on behalf of myself and my principals, representatives, employees and agents, I agree that I am subject to the Bylaws and Rules of The United States Equestrian Federation, Inc. (the "Federation") and the local rules of \_\_\_\_\_(Competition). I agree to be bound by the Bylaws and Rules of the Federation and of the competition. I will accept as final the decision of the Hearing Committee on any question arising under the Rules, and agree to release and hold harmless the competition, the Federation, their officials, directors and employees for any action taken under the Rules. I represent that I am eligible to enter and/or participate under the Rules, and every horse I am entering is eligible as entered. I also agree that as a condition of and in consideration of acceptance of entry, the Federation and/or the Competition may use or assign photographs, videos, audios, cable - casts, broadcasts, internet, film, new media or other likenesses of me and my horse taken during the course of the competition for the promotion, coverage or benefit of the competition, sport, or the Federation. Those likenesses shall not be used to advertise a product and they may not be used in such a way as to jeopardize amateur status. I hereby expressly and irrevocably waive and release any rights in connection with such use, including any claim to compensation, invasion of privacy, right of publicity, or to misappropriation. The construction and application of Federation rules are governed by the laws of the State of New York, and any action instituted against the Federation must be filed in New York State. See GR908.4.

**BY SIGNING BELOW, I AGREE** that I have read, understand, and agree to be bound by all applicable Federation Bylaws, rules, and policies including the USEF Safe Sport Policy and Minor Athlete Abuse Prevention Policies (MAAPP) as published at www.usef.org, as amended from time to time, as well as all terms and provisions of this Prize List. If I am signing and submitting this Agreement electronically, I acknowledge that my electronic signature shall have the same validity, force and effect as if I affixed my signature by my own hand.

**RIDER/DRIVER/HANDLER/VAULTER/LONGEUR** (mandatory)

Signature: \_\_\_\_\_

Print Name: \_\_\_\_\_

**TRAINER** (mandatory)

Signature: \_\_\_\_\_

Print Name: \_\_\_\_\_

**OWNER/AGENT** (mandatory)

Signature: \_\_\_\_\_

Print Name: \_\_\_\_\_

**COACH** (if applicable)

Signature: \_\_\_\_\_

Print Name: \_\_\_\_\_

Parent/Guardian Signature: (Required if Rider/Driver/Handler/Vaultler/Longeur is a minor) \_\_\_\_\_

Print Parent//Guardian Name: \_\_\_\_\_ Emergency Contact Phone No. \_\_\_\_\_

Is Rider/Driver/Vaultler a U.S. Citizen:  Yes  No

## USEF MEMBERSHIP STATEMENT

Life, senior active and junior active members shall be eligible to participate in all classes at Regular Competitions, Eventing Competitions at the Modified Level or above and Combined Driving Competitions at the Advanced Level, Dressage, Reining and Vaulting Competitions and Endurance Rides. A nonmember may participate as a handler, rider, driver, owner, lessee, agent, coach or trainer at Regular Competitions, Eventing Competitions, Dressage Competitions, Reining Competitions and Combined Driving Competitions upon payment of a \$45 Show Pass fee. Participants in the following classes are exempted from the Requirements of this rule: 1) headline; 2) exhibitions; 3) games and races; 4) classes for 4-H members; 5) walk trot (exception: Friesian performance FRZ22) and academy classes [academy classes are classes limited to horses used regularly in a lesson program]; 6) USDF introductory level tests, pas de deux and quadrille classes; 7) NRHA Endorsed Reining Competitions. 8) Opportunity classes, 9) citizens of other nations who have proof, in English, of current membership in good standing of their own National Federation, 10) USEA beginner novice division; and 11) assistant handlers in Dressage Sport Horse Breeding classes.

Exhibitors are requested to thoroughly acquaint themselves with the following rules and regulations. Exhibitors participating in divisions recognized by the USEF will also be governed by USEF rules. Any changes in the current USEF rule book will automatically become a part of this prize list. EVERY CLASS OFFERED HEREIN WHICH IS COVERED BY THE RULES AND SPECIFICATIONS OF THE CURRENT USEF RULE BOOK WILL BE CONDUCTED AND JUDGED IN ACCORDANCE THEREWITH. All exhibitors are required to be thoroughly acquainted with any and all federal and state laws and regulations governing horses and horse shows. The American Royal Association, Inc., reserves the right to decline any exhibitor and/or said exhibitor's horses before the show and reserves the right to order from the premises during the show any exhibitor and/or exhibitor's horses without being held liable for damages of any kind, and this shall be accepted as a condition of entry. In this event, all fees paid and prize money won shall be forfeited. It is also a condition of entry that each exhibitor shall hold the American Royal Association, Inc, its directors and employees, and the UPHA, its directors and employees, harmless for any loss, damage or accident to horses or equipment.

USEF ENTRY AGREEMENT: By entering a Federation-licensed Competition and signing this entry blank as the Owner, Lessee, Trainer, Manager, Agent, Coach, Driver, Rider, Handler, Vaultor or Longeur and on behalf of myself and my principals, representatives, employees and agents, I agree that I am subject to the Bylaws and Rules of The United States Equestrian Federation, Inc. [the "Federation"] and the local rules of UPHA American Royal National Championship Horse Show. I agree to be bound by the Bylaws and Rules of the Federation and of the competition. I will accept as final the decision of the Hearing Committee on any question arising under the Rules, and agree to release and hold harmless the competition, the Federation, their officials, directors and employees for any action taken under the Rules. I represent that I am eligible to enter and/or participate under the Rules, and every horse I am entering is eligible as entered. I also agree that as a condition of and in consideration of acceptance of entry, the Federation and/or the Competition may use or assign photographs, videos, audios, cable - casts, broadcasts, internet, film, new media or other likenesses of me and my horse taken during the course of the competition for the promotion, coverage or benefit of the competition, sport, or the Federation. Those likenesses shall not be used to advertise a product and they may not be used in such a way as to jeopardize amateur status. I hereby expressly and irrevocably waive and release any rights in connection with such use, including any claim to compensation, invasion of privacy, right of publicity, or to misappropriation. The construction and application of Federation rules are governed by the laws of the State of New York, and any action instituted against the Federation must be filed in New York State. See GR908.4

Dear USEF Participant:

USEF thanks you for participating in this competition and your support of USEF's continuous efforts to provide the safest environment possible for our athletes and other participants. Strategies for safeguarding athletes continue to evolve, and we are fully committed to keeping pace with best practices.

The purpose of this letter is to remind you that you are bound by the U.S. Center for SafeSport Code, USEF Safe Sport Policy, and [Minor Athlete Abuse Prevention Policies](#), also known as the MAAPP. This includes the SafeSport Training requirement for adult members and participants who have regular contact with minor athletes. Additionally, please be reminded about reporting obligations. Any concerns that are non-sexual in nature, please use the [USEF Safe Sport Incident Reporting Form](#) available on the USEF website. Concerns or suspicions regarding sexual misconduct must be reported to <https://safesport.i-sight.com/portal> and the authorities if a minor is involved. All of this information can be found in the USEF [Safe Sport Policy](#).

Please take a moment to review the new USEF [Safe Sport web pages](#) on the USEF website to find comprehensive resources regarding USEF Safe Sport efforts. You can also contact Sarah Gilbert, USEF Safe Sport Program Coordinator, at [sgilbert@usef.org](mailto:sgilbert@usef.org) for any questions or concerns relating to the USEF Safe Sport program.

Thank you for your support and for helping us bring the joy of horse sports to as many people as possible!

**UPHA American Royal National  
Championship November 6-11, 2023  
Entries Close October 9, 2023**

One Horse per entry Blank

**Make checks payable to:**

UPHA/American Royal National Championship

**Mail To: Beth Snider  
65 Old Taylorsville Road  
Shelbyville, KY 40065**

Phone (502) 314-7960; email [horseshowentries18@gmail.com](mailto:horseshowentries18@gmail.com)

**PLEASE PRINT OR TYPE (Fill out completely)**

**Owner** \_\_\_\_\_ USEF # \_\_\_\_\_ Association # \_\_\_\_\_

Address \_\_\_\_\_ City/State/Zip \_\_\_\_\_

Phone # \_\_\_\_\_ Cell Phone # \_\_\_\_\_ E-Mail \_\_\_\_\_

**Trainer** \_\_\_\_\_ USEF # \_\_\_\_\_ Association # \_\_\_\_\_

Address \_\_\_\_\_ City/State/Zip \_\_\_\_\_

Phone # \_\_\_\_\_ Cell Phone # \_\_\_\_\_ E-Mail \_\_\_\_\_

**Rider/Driver/Handler** \_\_\_\_\_ USEF # \_\_\_\_\_ Association # \_\_\_\_\_

Address \_\_\_\_\_ City/State/Zip \_\_\_\_\_

Phone # \_\_\_\_\_ Cell Phone # \_\_\_\_\_ E-Mail \_\_\_\_\_

**Make Checks payable to:** \_\_\_\_\_ **Social Security /Tax ID** \_\_\_\_\_

**Address** \_\_\_\_\_ **City/State/Zip** \_\_\_\_\_

Office use	Horse Name			Registration #	USEF #
Color	Sex	Age		Height	
Class #					Total Fees
Entry Fee					

	<b>TOTAL ENTRY FEES</b>	\$
#	STALLS @ \$200 EACH	\$
#	SHAVINGS @ \$10 EACH	\$
#	USEF DRUG FEE @ \$23 PER HORSE	\$ 23.00
#	OFFICE FEE @\$30 PER ENTRY	\$ 30.00
#	POST ENTRY FEE @\$50.00	
#	EXHIBITOR BADGE @\$30.00	
#	PARKING PASS @\$25.00 – Lot B	
#	PARKING PASS @ \$35.00 – LOT A; MAXIMUM OF 2 PER TRAINER	
	<b>TOTAL REMITTANCE</b>	\$

**USEF ENTRY AGREEMENT ON THE BACK MUST BE SIGNED.** Signed: YES NO

Method of Payment: Check \_\_\_ Visa \_\_\_ Mastercard \_\_\_ Discover \_\_\_ American Express \_\_\_

Account # \_\_\_\_\_ Expiration Date \_\_\_\_\_

Security Code: \_\_\_\_\_ Signature \_\_\_\_\_

## **You can do your entries on line**

We are offering online entries through [www.horseshowsonline.com](http://www.horseshowsonline.com)

Below are the instructions to enter online

### **What you need:**

A free account at Horse Shows Online. If you don't already have an account you can create one at [www.horseshowsonline.com](http://www.horseshowsonline.com). Horse Shows Online basic membership is free. A record in your account for each person and horse that you will use on show entry forms when you enter a show. Records will be saved and can be used for future shows.

### **How do I get started:**

Login to Horse Shows Online at [www.horseshowsonline.com](http://www.horseshowsonline.com), click on the member services button on the main menu. Once you are logged in click the "My Horses, People, Shows" button in the member menu. At the People, Horses, Shows page, add any new people and horses to your account as required on the appropriate tab (ie: My People, My Horses). People and horses are saved with your account. Once you have those records in your account you can use them at every show you enter.

Click the "Enter Show" button to select the show you want to enter and follow the steps in the outline entry wizard.

### **Steps to enter a show**

Select the show you want to enter from your "My People, Horses, Shows" page on the My Show Entries tab, or find the show you want to enter in the show selector and click the Online Entry Icon. This will start the online entry wizard. Make sure you have already created the horses and people in your member account.

The online entry wizard will guide you through the steps to complete the entry form. The basic steps in the wizard are:

Select the horses, people and riders for your entry

Select the classes each rider is entered in

Select the quantity for stalls and other fees

Confirm your selections

Checkout and submit the show entry

The final step generates the completed entry form and submits your entry to the show for review and acceptance. If the show requires a payment at entry time you will be prompted for your credit card information.

### **Tips**

You can cancel the entry part way through the wizard and resume the entry later on. For example, if you need to add more people to your account, or just want to come back and complete the entry later. Unfinished entry forms are listed in your "My entries" tab and will allow you to edit the entry.

People and horses you create in your account are saved permanently and can be used in other shows you enter. You only need to add people and horses once and then can be re used.



# INTRODUCING ...



# PURSE OF

# \$100,000

+ \$15,000 in Trainer Incentives

To be held at the UPHA/American Royal National Championship Horse Show

## MISSION STATEMENT:

"To promote and enhance the Standardbred Roadster Industry across North America."

- Purse **\$100,000.00**;
- Winning trainer receives **\$10,000**;
- Reserve trainer receives **\$5,000**;
- Open to registered Standardbreds only;
- Owners who purchase an entry into the class may nominate one horse for every nomination purchased;
- Owners are not required to designate a horse until time of horse show entry deadline;
- Nominations are available to the public at a starting bid of \$7,500;
- USEF Rules and Regulations to govern the class;
- Nominations may be sold, traded or given away until time of horse show entry deadline.

## CATCH THE EXCITEMENT!

**Don't miss out on this chance to compete for the biggest purse in the history of the Roadster Show Horse Division!**

**Held at the beautiful facilities of the prestigious American Royal National Championship horse show!**

*\*Participation in this class also qualifies entries to compete for the National Championship title held on Saturday night.*

The Standardbred Roadster 100 contact:

Meryl Stoltzfus • 717-629-6036 • merylstoltzfus@gmail.com

You can also find all information on the (ARHPA)  
American Road Horse and Pony Association website.

Rick Adams • 678-296-7442 • email: roadhorses1966@gmail.com



American Royal Horse Show  
Manager - Kent Moeller • 804-363-3085  
kentamoeller@gmail.com

Class sponsored by



Trophies sponsored by







## Terms & Conditions for THE STANDARDBRED ROADSTER

**The purse shall be \$100,000.**

*All USEF rules and regulations shall govern this class.*

Winning bidders of nominations will receive a certificate from The Standardbred Journal (TSJ) confirming their ownership of an entry. This certificate **MUST** be submitted to the horse show secretary at time of entry.

Nomination certificates may be sold, traded or given away until time of horse show entry deadline. If nominations are sold, the transfer section on the back of the certificate must be completed, signed and dated by the buyer and seller and submitted to TSJ by the means listed on the certificate. TSJ will then issue an updated certificate reflecting the ownership change.

Owners must have their entries submitted by the deadline or forfeit their money. Additionally, once a horse has been entered, that nomination is valid for that horse only. Any owners that scratch an entry will forfeit their money. The only exception to this rule is as follows: If a horse becomes lame or ill and is unable to show, the owner of the nomination is allowed to substitute a horse. A vet certificate will be required detailing why the entry is unable to start. If a horse is determined unable to start at the show grounds, the vet appointed by the horse show will need to inspect and submit a certificate. If the owner of a nomination cannot produce a substitute, they forfeit their money. The can, however, give their nomination to another barn with a suitable entry, providing that entry meets the eligibility requirements. Any agreement, trade, or deal made must be submitted in writing, detailing all agreements made to TSJ to protect the future integrity of this class.

All owners, exhibitors and trainers must be members of USEF, ARHPA, UPHA and USTA.

Monies will be escrowed by TSJ and checks mailed within two weeks of completion of show. W9 forms must be completed before any payment will be released. owners are highly encouraged to submit W9 forms to TSJ at time of entry or before. Trainers incentive winners must also have W9 forms completed before checks will be released.

*Purse money to be split as follows:*

1st - \$23,000	2nd - \$18,000	3rd - \$12,000	4th - \$9,500	5th - \$9,000
6th - \$8,000	7th - \$7,500	8th - \$7,000	9th - \$6,000	10th - \$5,000

*Trainers incentive checks will be awarded to the two top placing entries as follows:*

- The trainer of the winning entry will receive \$10,000
  - The trainer of the reserve champion will receive \$5,000
- Trainers must also complete a W9 form before any monies can be released.

The USTA will sponsor all trophies for this class. The winning entry will receive a lifetime trophy that is theirs to keep. There will also be a perpetual cup moving trophy that will be awarded and moved to the winning entries' barn every year.

Horse must be registered as "standard" with the USTA. Any horse registered as "non standard" is not eligible.

Horse must have shown in at least 4 classes at two shows to be eligible to compete in this class.

Horse may win this class a total of three times before being excluded from further competition in this event.

Further questions may be directed to Meryl Stoltzfus (*representative for The Standardbred Roadster 100 as appointed by TSJ*) at 717-629-6036 or by email at [merylstoltzfus@gmail.com](mailto:merylstoltzfus@gmail.com).

The Standardbred Journal is a 501c3 non profit organization. Any donations are tax deductible and a receipt will be furnished. Our Mission Statement is: "To provide education, news and marketing opportunities to all horse enthusiasts and to raise funds to promote, enhance and protect the Standardbred industry. To a continuously enhance integrity and inspire future generations to maintain respect within the industry."

Our mailing address: 7179 Township Road 652,  
Millersburg, OH 44654. Phone: 330-521-8219.

*Thank you! To buyers of nominations and to everyone who has given of their talents, time, efforts and money to make this lofty vision a reality!*





# American Saddlebred Horse Division

All American Saddlebred Horses entered must be registered with the American Saddlebred Horse and Breeders Association or the Canadian American Saddle Horse Registry. They must be entered in their full registered names with registration numbers and under the name of owner(s) of record with the ASHBA or CASHR.

A copy of the registration papers showing proof of ownership, or a copy of the registration papers with a Certificate of Eligibility to Show issued by the ASHBA must be submitted with the entry form at the time of making the entry. The copies will be returned when you pick up your exhibitor numbers if requested. (Horses shown in USEF Regular Member Shows prior to December 31, 1973, are exempt.)

Owners and trainers of horses participating at USEF recognized competitions in all Saddlebred sections must be members in good standing with the American Saddlebred Horse and Breeders Association, Inc.

Judging and Show Specifications for this Division please refer to USEF RULEBOOK  
CHAPTER SB101-SB 205.

## FIVE GAITED DIVISION

**Class No. 131 \$12,000+ UPHA CLASSIC GRAND CHAMPIONSHIP for THREE-YEAR-OLD AND UNDER.** Horses must be nominated, eligibility paid and placed first through sixth in a prior UPHA Classic Five gaited class during the year of the Grand Championship. Owners, riders and trainers must be UPHA members. Horses must compete in the section they have qualified. All entry fees, including scratches will be added back to a \$12,000 purse. \$600 will be deducted each for 6th, 7th and 8th places (\$1,800 total) and the balance divided. Awards are trophy plus:

1 <sup>st</sup>	2 <sup>nd</sup>	3 <sup>rd</sup>	4 <sup>th</sup>	5 <sup>th</sup>	6 <sup>th</sup>	7 <sup>th</sup>	8 <sup>th</sup>
40%	30%	15%	10%	5%	\$600	\$600	\$600

**Entry fee: \$600** A non-refundable nominating fee of \$100 is to accompany entry blank. THE FINAL PAYMENT OF \$500 WILL BE CHARGED TO YOUR ACCOUNT 24 HOURS PRIOR TO THE START OF THE SESSION IN WHICH THE CLASS IS HELD. ENTRIES MUST BE SCRATCHED IN THE SHOW OFFICE IF YOU DO NOT INTEND TO SHOW. If the horse is NOT scratched, your account will be charged for the final payment of \$500. Entry fee money is non-refundable as it becomes part of the prize money.

INCLUDE SIRE AND DAM ON ENTRY FORM.

Thursday Evening

### Class No.

28	\$400 MARE, OPEN Entry fee \$45.00	Mon. Evening
31	\$400 THREE-YEAR-OLD Entry fee \$45.00	Mon. Evening
37	\$400 WILL SHRIVER STALLION OPEN Entry fee \$45.00	Mon. Evening
40	\$400 MARE AMATEUR EXHIBITOR -18 and over. Entry fee \$45.00	Tue. Matinee
50	\$400 TWO-YEAR-OLD Entry Fee \$45.00	Tue. Matinee
56	\$400 MARE - LADY EXHIBITOR, over 18 years of age. Entry fee \$45.00	Tue. Evening
63	\$400 GELDING - LADY EXHIBITOR, over 18 years of age Entry fee \$45.00	Tue. Evening
66	\$400 STALLIONS/GELDINGS-AMATEUR EXHIBITOR 18 & over. Entry fee \$45.00	Tue. Evening
69	\$400 GELDING, OPEN Entry fee \$45.00	Tue. Evening

91	\$400 LADIES AMATEUR Entry fee \$45.00	Wed. Evening
94	\$400 JUNIOR EXHIBITOR, 14 through 17 years of age. Entry fee \$45.00	Wed. Evening
103	\$400 JUNIOR HORSE Entry fee \$45.00	Wed. Evening
105	\$400 JUNIOR EXHIBITOR, 13 years of age and under. Entry fee \$45.00	Thu. Matinee
163	<b>\$2,000 LADY EXHIBITOR NATIONAL STAKE</b> Riders over 18 years of age. Must have shown in class 56 or 63. Entry fee \$250.00	Fri. Evening
172	<b>\$1,000 JUNIOR EXHIBITOR NATIONAL CHAMPIONSHIP, 13 &amp; Under</b> Horses must have shown in Class 105. Entry fee \$125.00	Sat. Matinee
178	<b>\$1,000 LADIES AMATEUR NATIONAL STAKE</b> Horses must have shown in Class 91. Entry fee \$125.00	Sat. Evening
183	<b>\$2,000 AMATEUR EXHIBITOR NATIONAL STAKE</b> Horses must have shown in Class 40, 66 or Missouri-Kansas-Iowa Amateur Class 55. Entry fee \$250.00	Sat. Evening
185	<b>\$1,000 JUNIOR EXHIBITOR NATIONAL CHAMPIONSHIP, 14-17</b> Horses must have shown in Class 94. Entry fee \$125.00	Sat. Evening
191	<b>\$12,000 FIVE GAITED NATIONAL CHAMPIONSHIP</b> Horses must have been shown in any class in this or Missouri-Kansas-Iowa Five Gaited section. Entries should declare their intent to participate in this championship class on the entry blank at time of submission. <i>You must officially declare or officially scratch the class by 4:00 p.m. the day of the class.</i> An entry fee of \$700 will be deducted from winners' premiums only. Entry fee \$700	Sat. Evening

## MISSOURI-KANSAS-IOWA CLASSES

### MISSOURI-KANSAS-IOWA FIVE GAITED

Class No.		
19	\$400 OPEN Entry fee \$45.00	Mon. Matinee
55	\$400 AMATEUR OR JUNIOR EXHIBITOR Entry fee \$45.00	Tue. Evening
117	\$400 AMATEUR OR JUNIOR EXHIBITOR STAKE. Open to horses shown in Class 55. Entry fee \$45.00	Thu. Matinee
159	\$400 TOM BASS MEMORIAL STAKE. Open to horses shown in the Missouri-Kansas-Iowa Five Gaited section. Entry fee \$45.00	Fri. Evening

## THREE GAITED DIVISION

**Class No. 128 - \$12,000+ UPHA CLASSIC GRAND CHAMPIONSHIP for THREE-YEAR-OLD and UNDER.** Horses must be nominated, eligibility paid and placed first through sixth in a prior UPHA Classic Three-Gaited class during the year of the Grand Championship. Owners, riders and trainers must be UPHA members. Horses must compete in the section they have qualified. All entry fees, including scratches will be added back to a \$12,000 purse. \$600 will be deducted each for 6th, 7th and 8th places (\$1,800 total) and the balance divided. Awards are trophy plus:

1 <sup>st</sup>	2 <sup>nd</sup>	3 <sup>rd</sup>	4 <sup>th</sup>	5 <sup>th</sup>	6 <sup>th</sup>	7 <sup>th</sup>	8 <sup>th</sup>
40%	30%	15%	10%	5%	\$600	\$600	\$600

Entry fee: \$600. A non-refundable nominating fee of \$100 is to accompany entry blank. THE FINAL PAYMENT OF \$500 WILL BE CHARGED TO YOUR ACCOUNT 24 HOURS PRIOR TO THE START OF THE SESSION IN WHICH THE CLASS IS HELD. ENTRIES MUST BE SCRATCHED IN THE SHOW OFFICE IF YOU DO NOT INTEND TO SHOW. If the horse is NOT scratched, your account will be charged for the final payment of \$500. Entry fee money is non-refundable as it becomes part of the prize money.

INCLUDE SIRE AND DAM ON ENTRY FORM.

Thursday Evening

**Class No.**

23	\$400 OVER 15.2 HANDS, OPEN Entry fee \$45.00	Mon. Evening
26	\$400 THREE-YEAR-OLD Entry fee \$45.00	Mon. Evening
29	\$400 15.2 HANDS AND UNDER, AMATEUR EXHIBITOR 18 years of age and over. Entry fee \$45.00	Mon. Evening
34	\$400 LADIES AMATEUR Entry fee \$45.00	Mon. Evening
43	\$400 15.2 HANDS AND UNDER LADY EXHIBITOR, over 18 years of age. Entry fee \$45.00	Tue. Matinee
44	\$400 TWO-YEAR-OLD Entry fee \$45.00	Tue. Matinee
51	\$400 OVER 15.2 HANDS - AMATEUR EXHIBITOR 18 years of age and over. Entry fee \$45.00	Tue. Matinee
61	\$400 15.2 HANDS AND UNDER, OPEN. Entry fee \$45.00	Tue. Evening
64	\$400 JUNIOR HORSE, (four-year-old and under) Entry fee \$45.00	Tue. Evening
67	\$400 OVER 15.2 HANDS LADY EXHIBITOR, over 18 years of age. Entry fee \$45.00	Tue. Evening
90	\$400 JUNIOR EXHIBITOR, 14-17 years of age Entry fee \$45.00	Wed. Evening
98	\$400 JUNIOR EXHIBITOR, 13 years of age and under. Entry fee \$45.00	Wed. Evening
150	<b>\$1,000 LADIES AMATEUR NATIONAL STAKE</b> Horses must have been shown in Class 34. Entry fee \$125.00	Fri. Evening
156	<b>\$2,000 AMATEUR EXHIBITOR NATIONAL STAKE</b> Horses must have been shown in Class 29, 51 or Missouri-Kansas-Iowa Amateur Exhibitor Class 12. Entry fee \$250.00	Fri. Evening

180	<b>\$1,000 JUNIOR EXHIBITOR NATIONAL CHAMPIONSHIP 14-17</b> Horses must have shown in class 90. Entry fee \$125.00	Sat. Evening
181	<b>\$2,000 LADY EXHIBITOR NATIONAL STAKE</b> Riders over 18 years of age. Must have shown in Class 43 or 67. Entry fee \$250.00	Sat. Evening
186	<b>\$10,000 THREE GAITED NATIONAL CHAMPIONSHIP</b> Horses must have been shown in any class in this section or Missouri-Kansas-Iowa Three Gaited Section. Entries should declare their intent to participate in this championship class on the entry blank at time of submission. <i>You must officially declare or officially scratch the class by 4:00 p.m. the day of the class.</i> An entry fee of \$600 will be deducted from winners' premiums only. Entry fee \$600.00	Sat. Evening
188	<b>\$1,000 JUNIOR EXHIBITOR NATIONAL CHAMPIONSHIP 13 &amp; UNDER</b> Horse must have shown in class 98. Entry fee \$125.00	Sat. Evening

## **MISSOURI-KANSAS-IOWA THREE GAITED**

Class No.		
12	<b>\$400 AMATEUR OR JUNIOR EXHIBITOR</b> Entry fee \$45.00	Mon. Matinee
21	<b>\$400 Open Three Gaited</b> Entry fee \$45.00	Mon. Evening
110	<b>\$400 Open Stake</b> Open to horses shown in the Missouri-Kansas-Iowa Three Gaited section. Entry fee \$45.00	Thu. Matinee
119	<b>\$400 AMATEUR OR JUNIOR EXHIBITOR STAKE</b> Open to horses shown in Class 12. Entry Fee \$45.00	Thu. Matinee

## **SADDLEBRED-TYPE PONY**

Class No.		
81	<b>\$400 FIVE GAITED PONY</b> Entry fee \$45.00	Wed. Matinee
84	<b>\$400 THREE GAITED PONY</b> Entry fee \$45.00	Wed. Matinee
134	<b>\$400 THREE GAITED PONY NATIONAL CHAMPIONSHIP</b> Must have been shown in class 84. Entry fee \$45.00	Fri. Matinee
145	<b>\$400 FIVE GAITED PONY NATIONAL CHAMPIONSHIP</b> Must have been shown in class 81. Entry fee \$45.00	Fri. Matinee

## FINE HARNESS DIVISION

**Class No. 121 - \$12,000+ UPHA CLASSIC GRAND CHAMPIONSHIP for THREE-YEAR-OLD and UNDER.** Horses must be nominated, eligibility paid and placed first through sixth in a prior UPHA Classic Fine Harness class during the year of the Grand Championship. Owners, drivers and trainers must be UPHA members. Horses must compete in the section they have qualified. All entry fees, including scratches will be added back to a \$12,000 purse. \$600 will be deducted each for 6th, 7th and 8th places (\$1,800 total) and the balance divided. Awards are trophy plus:

1 <sup>st</sup>	2 <sup>nd</sup>	3 <sup>rd</sup>	4 <sup>th</sup>	5 <sup>th</sup>	6 <sup>th</sup>	7 <sup>th</sup>	8 <sup>th</sup>
40%	30%	15%	10%	5%	\$600	\$600	\$600

Entry fee: \$600. A non-refundable nominating fee of \$100 is to accompany entry blank. THE FINAL PAYMENT OF \$500 WILL BE CHARGED TO YOUR ACCOUNT 24 HOURS PRIOR TO THE START OF THE SESSION IN WHICH THE CLASS IS HELD. ENTRIES MUST BE SCRATCHED IN THE SHOW OFFICE IF YOU DO NOT INTEND TO SHOW. If the horse is NOT scratched, your account will be charged for the final payment of \$500. Entry fee money is non-refundable as it becomes part of the prize money.

INCLUDE SIRE AND DAM ON ENTRY FORM

Thursday Evening

**Class No.**

14	\$400 THREE-YEAR-OLD Entry fee \$45.00	Mon. Matinee
20	\$400 OPEN FINE HARNESS Entry fee \$45.00	Mon. Evening
39	\$400 TWO-YEAR-OLD Entry fee \$45.00	Tue. Matinee
46	\$400 JUNIOR HORSE (four-year-old and under) Entry fee \$45.00	Tue. Matinee
54	\$400 AMATEUR EXHIBITOR Entry fee \$45.00	Tue. Evening
60	\$400 LADY EXHIBITOR Entry fee \$45.00	Tue. Evening
88	ASHBA BILL WISE TWO-YEAR-OLD FINE HARNESS SWEEPSTAKES Refer to page 26	Wed. Evening
151	<b>\$1,000 AMATEUR EXHIBITOR NATIONAL CHAMPIONSHIP</b> Must have shown in Class 54 or 60 (if shown by an amateur) Entry fee \$125.00	Fri. Evening
153	<b>\$1,000 LADIES FINE HARNESS NATIONAL CHAMPIONSHIP</b> Must have shown in class 60 Entry Fee \$125.00	Fri. Evening
177	<b>\$7,500 FINE HARNESS NATIONAL CHAMPIONSHIP</b> Horses must have shown in any other class in this section or the Missouri-Kansas-Iowa Fine Harness section. Entries should declare their intent to participate in this championship class on the entry blank at time of submission. <i>You must officially declare or officially scratch the class by 4:00 p.m. the day of the class.</i> An entry fee of \$500 will be deducted from winners' premiums only. Entry fee \$500.00	Sat. Evening

### MISSOURI-KANSAS-IOWA FINE HARNESS

2	\$400 MISSOURI-KANSAS-IOWA FINE HARNESS Entry fee \$45.00	Mon. Matinee
---	--	--------------



## SADDLEBRED PARK DIVISION

**Class No. 125 - \$12,000+ UPHA CLASSIC GRAND CHAMPIONSHIP for THREE-YEAR-OLD and UNDER.** Horses must be nominated, eligibility paid and placed first through sixth in a prior UPHA Classic Park class during the year of the Grand Championship. Horses will be stripped. Owners, drivers and trainers must be UPHA members. Horses must compete in the section they have qualified. All entry fees, including scratches will be added back to a \$12,000 purse. \$600 will be deducted each for 6th, 7th and 8th places (\$1,800 total) and the balance divided. Awards are trophy plus:

<b>1<sup>st</sup></b>	<b>2<sup>nd</sup></b>	<b>3<sup>rd</sup></b>	<b>4<sup>th</sup></b>	<b>5<sup>th</sup></b>	<b>6<sup>th</sup></b>	<b>7<sup>th</sup></b>	<b>8<sup>th</sup></b>
40%	30%	15%	10%	5%	\$600	\$600	\$600

Entry fee: \$600. A non-refundable nominating fee of \$100 is to accompany entry blank. THE FINAL PAYMENT OF \$500 WILL BE CHARGED TO YOUR ACCOUNT 24 HOURS PRIOR TO THE START OF THE SESSION IN WHICH THE CLASS IS HELD. ENTRIES MUST BE SCRATCHED IN THE SHOW OFFICE IF YOU DO NOT INTEND TO SHOW. If the horse is NOT scratched, your account will be charged for the final payment of \$500. Entry fee money is non-refundable as it becomes part of the prize money.

INCLUDE SIRE AND DAM ON ENTRY FORM

Thursday Evening

**Class No.**

3	\$400 THREE-YEAR-OLD, THREE-GAITED PARK HORSE Entry fee \$45.00	Mon. Matinee
27	\$400 THREE GAITED PARK, AMATEUR EXHIBITOR Entry fee \$45.00	Mon. Evening
35	\$400 THREE GAITED PARK, OPEN Entry fee \$45.00	Mon. Evening
52	\$400 THREE GAITED PARK, JUNIOR HORSE Entry fee \$45.00	Tue. Matinee
93	ASHBA BILL WISE TWO-YEAR-OLD THREE-GAITED PARK SWEEPSTAKES Refer to page 26	Wed. Evening
101	\$400 THREE GAITED PARK, JUNIOR EXHIBITOR, 17 & under Entry fee \$45.00.	Wed. Evening
161	\$400 THREE GAITED PARK, AMATEUR EXHIBITOR CHAMPIONSHIP Horses must have shown in Class 27. Entry fee \$45.00	Fri. Evening
170	\$400 THREE GAITED PARK, JUNIOR EXHIBITOR NATIONAL CHAMPIONSHIP Must have been shown in class 101. Entry fee \$45.00	Sat. Matinee
189	\$2,000 ASB THREE GAITED PARK NATIONAL CHAMPIONSHIP Horses must have shown in any other class in this section. Entry fee \$250.00	Sat. Evening

### MISSOURI-KANSAS-IOWA SADDLEBRED PARK

30	\$400 MISSOURI-KANSAS-IOWA THREE GAITED PARK Entry Fee \$45.00	Mon. Evening
89	\$400 MISSOURI-KANSAS-IOWA THREE GAITED PARK STAKE Horses must have shown in Class 30. Entry Fee \$45.00	Wed. Evening

## SADDLEBRED PARK PLEASURE DIVISION

**Class No. 123 - \$12,000+ UPHA CLASSIC GRAND CHAMPIONSHIP for THREE GAITED PARK PLEASURE THREE-YEAR-OLD and UNDER.** Horses must be nominated, eligibility fee paid and placed first through sixth in a prior UPHA Classic Park Pleasure class during the year of the Grand Championships. Horses will be stripped. Owners, exhibitors and trainers must be UPHA members. All entry fees, including scratches, will be added back to a **\$12,000** purse. \$600 will be deducted for 6th, 7th and 8th places (\$1,800 total) and the balance divided Awards are trophy plus:

<b>1<sup>st</sup></b>	<b>2<sup>nd</sup></b>	<b>3<sup>rd</sup></b>	<b>4<sup>th</sup></b>	<b>5<sup>th</sup></b>	<b>6<sup>th</sup></b>	<b>7<sup>th</sup></b>	<b>8<sup>th</sup></b>
40%	30%	15%	10%	5%	\$600	\$600	\$600

Entry fee: \$600. A non-refundable nominating fee of \$100 is to accompany entry blank. THE FINAL PAYMENT OF \$500 WILL BE CHARGED TO YOUR ACCOUNT 24 HOURS PRIOR TO THE START OF THE SESSION IN WHICH THE CLASS IS HELD. ENTRIES MUST BE SCRATCHED IN THE SHOW OFFICE IF YOU DO NOT INTEND TO SHOW. If the horse is NOT scratched, your account will be charged for the final payment of \$500. Entry fee money is non-refundable as it becomes part of the prize money.

INCLUDE SIRE AND DAM ON ENTRY FORM.

Thursday Evening

### Class No.

7	\$400 ASB THREE-GAITED PARK PLEASURE, THREE-YEAR-OLD Entry fee \$45.00	Mon. Matinee
11	\$400 ASB THREE-GAITED PARK PLEASURE JUNIOR HORSE Entry fee \$45.00	Mon. Matinee
48	\$400 ASB PARK PLEASURE, OPEN Entry fee \$45.00	Tue. Matinee
114	\$400 ASB PARK PLEASURE NATIONAL CHAMPIONSHIP Horses must have shown in Class 48. Entry fee \$45.00	Thu. Matinee
138	\$400 ASB PARK PLEASURE JUNIOR HORSE NATIONAL CHAMPIONSHIP Must have shown in Class 7, 11, or 123. Entry fee \$45.00	Fri. Matinee

## AMERICAN SADDLEBRED PLEASURE HORSE DIVISION

*Horses must have been entered, shown, & judged at least one time during the 2023 competition year in division to compete.*

### THREE GAITED SHOW PLEASURE

#### Class No.

13	Veteran Show Pleasure Horse (Horses 11 age and older) Entry fee \$45.00	Mon. Matinee
41	\$400 AMATEUR EXHIBITOR, 18 - 38 years of age Entry fee \$45.00	Tue. Matinee
45	\$400 AMATEUR EXHIBITOR, 39 years and over Entry fee \$45.00	Tue. Matinee
74	WALK & TROT SHOW PLEASURE JUNIOR EXHIBITOR, 12 & under Entry fee \$25.00	Wed. Matinee
86	\$400 JUNIOR EXHIBITOR, 14 - 17 years Entry fee \$45.00	Wed. Matinee

79	VETERAN SHOW PLEASURE HORSE NATIONAL CHAMPIONSHIP CLASS Horses must have shown in class 13 Entry fee \$45.00	Wed. Matinee
80	\$400 JUNIOR EXHIBITOR, 13 years and under Entry fee \$45.00	Wed. Matinee
107	WALK & TROT SHOW PLEASURE NATIONAL CHAMPIONSHIP, JUNIOR EXHIBITOR 12 & under, Horse must have shown in class 74. Entry fee \$25.00	Thu. Matinee
142	<b>\$1,000 JUNIOR EXHIBITOR NATIONAL CHAMPIONSHIP, 13 &amp; under</b> Horse must have shown in class 80. Entry fee \$125.00	Fri. Matinee
157	<b>\$2,000 NATIONAL CHAMPIONSHIP ADULT RIDER</b> Horse must have shown in class 41 or 45. Entry fee \$250.00	Fri. Evening
173	<b>\$1,000 JUNIOR EXHIBITOR NATIONAL CHAMPIONSHIP, 14-17</b> Horse must have shown in class 86. Entry fee \$125.00	Sat. Matinee

## **MISSOURI-KANSAS-IOWA THREE GAITED SHOW PLEASURE**

<b>Class No.</b>		
25	\$400 MISSOURI-KANSAS-IOWA, JUNIOR EXHIBITOR Entry fee \$45.00	Mon. Evening
33	\$400 MISSOURI-KANSAS-IOWA AMATEUR, 18 Years and Over Entry fee \$45.00	Mon. Evening
83	\$400 MISSOURI-KANSAS-IOWA SHOW PLEASURE CHAMPIONSHIP Must have shown in Class 25 or 33 Entry fee \$45.00	Wed. Matinee

## **FIVE GAITED SHOW PLEASURE**

<b>Class No.</b>		
10	\$400 AMATEUR EXHIBITOR, 18-38 years of age Entry fee \$45.00	Mon. Matinee
17	\$400 AMATEUR EXHIBITOR, 39 years and over Entry fee \$45.00	Mon. Matinee
111	\$400 ASB JUNIOR EXHIBITOR, 17 and under Entry fee \$45.00	Thu. Matinee
120	<b>\$2,000 ADULT NATIONAL CHAMPIONSHIP</b> Horses must have shown in Class 10 or 17. Entry fee \$250.00	Thu. Matinee
168	<b>\$1,000 JUNIOR EXHIBITOR NATIONAL CHAMPIONSHIP</b> Horses must have shown in Class 111. Entry fee \$125.00	Sat. Matinee

## **MISSOURI-KANSAS-IOWA FIVE GAITED SHOW PLEASURE**

<b>Class No.</b>		
42	\$400 AMATEUR OR JUNIOR EXHIBITOR Entry fee \$45.00	Tue. Matinee
136	\$400 AMATEUR OR JUNIOR EXHIBITOR CHAMPIONSHIP Horses must have shown in class 42.	Fri. Matinee

## SHOW PLEASURE DRIVING

53	\$400 AMATEUR Entry fee \$45.00	Tue. Matinee
78	\$400 JUNIOR EXHIBITOR Entry fee \$45.00	Wed. Matinee
141	<b>\$1,000 AMATEUR SHOW PLEASURE DRIVING NATIONAL CHAMPIONSHIP</b> Horse must have shown in class 53. Entry fee \$125.00	Fri. Matinee
165	<b>\$1,000 JUNIOR EXHIBITOR SHOW PLEASURE DRIVING NATIONAL CHAMPIONSHIP</b> Horse must have shown in class 78. Entry fee \$125.00	Sat. Matinee

## COUNTRY PLEASURE DIVISION

### THREE GAITED DIVISION

#### Class No.

8	\$400 ADULT EXHIBITOR, 18 years and over Entry fee \$45.00	Mon. Matinee
76	\$400 JUNIOR EXHIBITOR, 13 years and under Entry fee \$45.00	Wed. Matinee
82	\$400 JUNIOR EXHIBITOR, 14-17 years of age Entry fee \$45.00	Wed. Matinee
116	<b>\$2,000 THREE GAITED COUNTRY PLEASURE, 18 YEARS AND OVER NATIONAL CHAMPIONSHIP</b> Must have been shown in class 8. Entry fee \$250.00	Thu. Matinee
143	<b>\$1,000 THREE GAITED COUNTRY PLEASURE NATIONAL CHAMPIONSHIP, 14-17</b> Horses must have been shown in Class 82. Entry fee \$125.00	Fri. Matinee
146	<b>\$1,000 THREE GAITED COUNTRY PLEASURE 13 &amp; UNDER NATIONAL CHAMPIONSHIP</b> Horse must have shown in class 76. Entry fee \$125.00	Fri. Matinee

## MISSOURI-KANSAS-IOWA COUNTRY PLEASURE

#### Class No.

16	\$400 MISSOURI-KANSAS-IOWA AMATEUR OR JUNIOR EXHIBITOR Entry fee \$45.00	Mon. Matinee
77	\$400 MISSOURI-KANSAS-IOWA STAKE Horse must have shown in Class 16 Entry fee \$45.00	Wed. Matinee

## COUNTRY PLEASURE DRIVING

#### Class No.

6	\$400 ASB COUNTRY PLEASURE DRIVING Entry fee \$45.00	Mon. Matinee
95	<b>\$1,000 COUNTRY PLEASURE DRIVING NATIONAL CHAMPIONSHIP</b> Horse must have shown in class 6 Entry fee \$125.00	Wed. Evening

## FIVE GAITED COUNTRY PLEASURE

18	\$400 ASB Country Pleasure Five Gaited Entry fee \$45.00	Mon. Matinee
----	---	--------------

106 \$400 ASB Country Pleasure Five Gaited National Championship  
Must have shown in class 18.  
Entry fee \$45.00  
Thurs. Matinee

## **WESTERN COUNTRY PLEASURE DIVISION**

**Class No.**

58 \$400 ASB WESTERN COUNTRY PLEASURE  
Entry fee \$45.00  
Tue. Evening

75 \$400 ASB WESTERN COUNTRY PLEASURE, LADIES  
Entry fee \$45.00  
Wed. Matinee

108 **\$2,000 NATIONAL CHAMPIONSHIP**  
Horses must have shown in Class 58 or 75.  
Entry fee \$250.00  
Thu. Matinee

## **HUNTER COUNTRY PLEASURE DIVISION**

**Class No.**

15 \$400 ASB HUNTER COUNTRY PLEASURE, Rider 18 & Over  
Entry fee \$45.00  
Mon. Matinee

65 \$400 ASB HUNTER COUNTRY PLEASURE, Junior Exhibitor  
Entry fee \$45.00  
Tues. Evening

97 **\$400 ASB HUNTER COUNTRY PLEASURE NATIONAL CHAMPIONSHIP**  
Horses must have shown in Class 15 or 65.  
Entry fee \$45.00  
Wed. Evening

## **OPEN PARADE HORSE DIVISION**

Judging and Show Specifications for this Division please refer to USEF RULEBOOK CHAPTER PH101-PH111

**Class No.**

99 \$400 OPEN PARADE HORSE  
Entry fee \$45.00  
Wed. Evening

154 **\$1,000 OPEN PARADE HORSE NATIONAL CHAMPIONSHIP**  
Horses must have shown in Class 99.  
Entry fee \$125.00  
Fri. Evening

---

# *Saddle Seat Equitation*

---

Judging and Show Specifications for this Division please refer to USEF RULEBOOK CHAPTER EQ100-EQ102 & EQ115-EQ120

---

The UPHA American Royal is proud to host the  
**USEF SADDLE SEAT MEDAL CLASS FINAL, USEF ADULT SADDLE SEAT MEDAL CLASS FINAL,  
and THE UPHA CHALLENGE CUP NATIONAL CHAMPIONSHIPS**

---

## **USEF SADDLE SEAT MEDAL FINAL**

The MOS Scoring System will be used.

Class No.

- 148 **USEF SADDLE SEAT ADULT AMATEUR MEDAL NATIONAL FINAL**  
Open to Senior Active amateur members of USEF, 18 years of age or older. See qualifying criteria on the USEF website. Entries will be worked on the rail and all contestants are required to perform a posted individual workout.  
Entry fee \$150 Friday Matinee – Finals
- 164 **USEF SADDLE SEAT MEDAL CLASS – PRELIMINARY**  
Open to Junior members of USEF who have not reached their 18<sup>th</sup> birthday in accordance with GR128. See qualifying criteria on the USEF website. The Final will consist of two rounds, both containing rail and pattern work.  
Van Sinderen Trophy\* & Ten Ribbons  
\*The Adrian Van Sinderen Memorial Trophy is a perpetual trophy awarded in accordance with USEF Rule GR806 and will remain in possession of USEF.  
Entry fee \$100.00 Saturday Morning- Preliminaries
- 176 **USEF SADDLE SEAT MEDAL CLASS - FINALS** Saturday Matinee- Finals

## **UPHA CHALLENGE CUP NATIONAL CHAMPIONSHIP CLASSES**

The MOS Scoring System will be used.

Class No.

- 70 **UPHA JUNIOR CHALLENGE CUP NATIONAL CHAMPIONSHIP – PHASE I (PRELIMINARY)**  
Phase I (preliminary) The UPHA Junior Challenge Cup National Championship Phase I (preliminary) is open to current UPHA junior members 13 years of age or under, placed first through fourth in a 13 & under or 17 & Under Qualifying Class or first or second in a UPHA Challenge Cup Chapter Championship.  
Entry fee \$100.00 Wednesday Morning – Phase I
- 87 **UPHA ADULT CHALLENGE CUP NATIONAL CHAMPIONSHIP-FINALS**  
Open to all ribbon winners from a UPHA Adult Challenge Cup qualifying class.  
Entry fee \$100.00 Wednesday Matinee
- 92 **UPHA JUNIOR CHALLENGE CUP NATIONAL CHAMPIONSHIP – FINALS**  
Trophy & Ten Ribbons Wednesday Evening – Finals
- 104 **UPHA NATIONAL CHALLENGE CUP CHAMPIONSHIP - PHASE I (PRELIMINARY)**  
Phase I (preliminary) The UPHA Challenge Cup National Championship is open riders who have placed first through fourth in a 17 & Under or 14-17 Qualifying Class or first or second in a UPHA Challenge Cup Chapter Championship.  
Entry fee \$100.00 Thursday Morning – Phase I
- 126 **UPHA NATIONAL CHALLENGE CUP CHAMPIONSHIP – FINALS** Thursday Evening – Finals
- 132 **UPHA 10 AND UNDER WALK/TROT NATIONAL CHALLENGE CUP CHAMPIONSHIP – PRELIMINARY**  
The UPHA 10 & Under Walk/Trot Challenge Cup National Championship is open to all ribbon winners from a UPHA Walk & Trot Challenge Cup qualifying class.  
Entry fee \$100.00 Friday Morning – Preliminaries
- 147 **UPHA 10 AND UNDER WALK/TROT NATIONAL CHALLENGE CUP CHAMPIONSHIP- FINALS** Friday Matinee – Finals



# UPHA EXCEPTIONAL CHALLENGE CUP NATIONAL CHAMPIONSHIP

Class No.

- 1 UPHA EXCEPTIONAL CHALLENGE CUP NATIONAL CHAMPIONSHIP, PHASE I  
Riders, designated as level 1-2, compete as a group at a walk and trot both directions of the ring, lineup and complete the individual workout.  
Entry fee \$50.00 Mon. Morning
- 22 UPHA EXCEPTIONAL CHALLENGE CUP NATIONAL CHAMPIONSHIP, PHASE II  
Phase II - Following rail work, the Top Ten riders shall be chosen for the awards presentation ceremony. From that group the Champion and Reserve Champion shall be tied. Trophy & ten Ribbons.  
Mon. Evening
- 38 UPHA EXCEPTIONAL CHALLENGE CUP WALK & TROT WITH ASSISTANCE NATIONAL CHAMPIONSHIP, PHASE I  
Riders, designated as level 3-5, compete on the lead as a group (or in groups) at a walk and trot both directions of the ring, lineup and complete the individual workout.  
Entry fee \$50.00 Tues. Morning
- 59 UPHA EXCEPTIONAL CHALLENGE CUP WALK & TROT WITH ASSISTANCE NATIONAL CHAMPIONSHIP, PHASE II  
Phase II - Following rail work, the Top Ten riders shall be chosen for the awards presentation ceremony. From that group the Champion and Reserve Champion shall be tied. Trophy & ten Ribbons.  
Tues. Evening
- 71 UPHA EXCEPTIONAL CHALLENGE CUP QUALIFYING CLASS (Qualifier for 2024)  
Entry fee \$25.00 Wed. Morning
- 72 UPHA EXCEPTIONAL CHALLENGE CUP Walk & Trot with Assistance (Qualifier for 2024)  
Entry fee \$25.00 Wed. Morning

## AMERICAN ROYAL SADDLE SEAT EQUITATION

Class No.

- 4 Adult Equitation  
Entry fee \$25.00 Mon. Matinee
- 113 13 & UNDER YEARS OF AGE -- Eight Ribbons  
Entry fee \$25.00 Thu. Matinee
- 135 16 AND 17 YEARS OF AGE -- Eight Ribbons  
Entry fee \$25.00 Fri. Matinee
- 139 JUNIOR NATIONAL CHAMPIONSHIP  
Open to riders that have shown in class 113 (13 & Under).  
Entry Fee \$50 Fri. Matinee
- 140 14 AND 15 YEARS OF AGE -- Eight Ribbons  
Entry fee \$25.00 Fri. Matinee
- 149 SENIOR NATIONAL CHAMPIONSHIP  
Open to riders that have shown in class 135 or 140 (14-17).  
Entry fee \$50.00 Fri. Evening
- 166 UPHA WALK & TROT CHALLENGE CUP CLASS-10 & Under (Qualifier for 2024).  
Entry Fee \$25.00 Sat. Matinee
- 174 WTC 10 YEARS OF AGE AND UNDER -Eight Ribbons  
Entry fee \$25.00 Sat. Matinee

## MISSOURI-KANSAS-IOWA EQUITATION

The rider must be a resident of Missouri, Iowa or Kansas and must have shown in three Missouri, Iowa or Kansas shows with a total of six classes. Any Saddle Seat type horse which can walk, trot and canter, may be used.

Class No.

- 5 17 YEARS OF AGE AND UNDER.  
Entry fee \$25.00 Mon. Matinee

# Roadster Division

Judging and Show Specifications for this Division please refer to USEF RULEBOOK CHAPTER RD101-RD114. Owners, Riders, Drivers, and Trainers must show proof of membership with the ARHPA to compete in the Roadster Division.

## ROADSTER HORSE

**Class No. 129 \$5,000+ ROADSTER Horse to Bike UPHA CLASSIC GRAND CHAMPIONSHIP.** Class is open to any horse registered with the ARHPA that has not been shown prior to January 1, 2022. There will be no qualifying classes. Owners, exhibitors and trainers must be UPHA members. The driver must be 18 years of age or older. The winner will not be eligible to compete in this class in the future. All entry fees, including scratches, will be added back to a \$5,000 purse. \$600 will be deducted for 6th, 7th and 8th place (\$1,800 total) and the balance divided. Awards are trophy plus:

1 <sup>st</sup>	2 <sup>nd</sup>	3 <sup>rd</sup>	4 <sup>th</sup>	5 <sup>th</sup>	6 <sup>th</sup>	7 <sup>th</sup>	8 <sup>th</sup>
40%	30%	15%	10%	5%	\$600	\$600	\$600

Entry fee: \$600. A non-refundable nominating fee of \$100 is to accompany entry blank. THE FINAL PAYMENT OF \$500 WILL BE CHARGED TO YOUR ACCOUNT 24 HOURS PRIOR TO THE START OF THE SESSION IN WHICH THE CLASS IS HELD. ENTRIES MUST BE SCRATCHED IN THE SHOW OFFICE IF YOU DO NOT INTEND TO SHOW. If the horse is NOT scratched, your account will be charged for the final payment of \$500. Entry fee money is non-refundable as it becomes part of the prize money.

Thursday Evening

### Class No.

32	\$400 SINGLE ROADSTER TO BIKE, AMATEUR EXHIBITOR Entry fee \$45.00	Mon. Evening
47	\$400 ROADSTER HORSE UNDER SADDLE, OPEN Entry fee \$45.00	Tue. Matinee
68	\$400 SINGLE ROADSTER TO BIKE, OPEN Entry fee \$45.00	Tue. Evening
102	THE STANDARD BRED ROADSTER 100 See pg. 39	Wed. Evening
112	\$400 ROADSTER HORSE TO WAGON Entry fee \$45.00	Thurs. Matinee
144	ROADSTER HORSE UNDER SADDLE NATIONAL CHAMPIONSHIP Horses must have been shown in Class 47. Entry fee \$45.00	Fri. Matinee
160	\$400 AMATEUR EXHIBITOR NATIONAL CHAMPIONSHIP Horses must have been shown in Class 32. Entry fee \$45.00	Fri. Evening
182	ROADSTER HORSE TO WAGON NATIONAL CHAMPIONSHIP Horse must have been shown in class 112. Entry fee \$250.00	Sat. Evening
187	\$2,000 NATIONAL CHAMPIONSHIP Horses must have shown in Class 68 or 102. Entry fee \$250.00	Sat. Evening

# ROADSTER PONIES

HELMETS ARE REQUIRED FOR JUNIOR EXHIBITORS

**Class No. 130 \$5,000+ ROADSTER PONY FOUR-YEAR-OLD AND UNDER UPHA CLASSIC GRAND CHAMPIONSHIP.** Ponies must be nominated, eligibility paid and placed first through sixth in a prior UPHA Road Pony Classic class during the year of the Grand Championship. Owners, drivers and trainers must be UPHA members. Ponies must compete in the section they have qualified in. All entry fees, including scratches, will be added back to a \$5,000 purse. \$300 will be deducted for 6th, 7th and 8th place (\$900 total) and the balance divided. Awards are trophy plus:

1 <sup>st</sup>	2 <sup>nd</sup>	3 <sup>rd</sup>	4 <sup>th</sup>	5 <sup>th</sup>	6 <sup>th</sup>	7 <sup>th</sup>	8 <sup>th</sup>
40%	30%	15%	10%	5%	\$300	\$300	\$300

Entry fee: \$300. A non-refundable nominating fee of \$100 is to accompany entry blank. THE FINAL PAYMENT OF \$200 WILL BE CHARGED TO YOUR ACCOUNT 24 HOURS PRIOR TO THE START OF THE SESSION IN WHICH THE CLASS IS HELD. ENTRIES MUST BE SCRATCHED IN THE SHOW OFFICE IF YOU DO NOT INTEND TO SHOW. If the horse is NOT scratched, your account will be charged for the final payment of \$200. Entry fee money is non-refundable as it becomes part of the prize money.

INCLUDE SIRE AND DAM ON ENTRY FORM

Thursday Evening

9	\$400 Missouri-Kansas-Iowa Road Pony Entry fee \$45.00	Mon. Matinee
57	\$400 OPEN ROAD PONY Entry fee \$45.00	Tue. Evening
62	\$400 AMATEUR EXHIBITOR, 18 and over Entry fee \$45.00	Tue. Evening
96	\$400 Roadster Pony Under Saddle, Junior Exhibitor Entry fee: \$45.00	Wed. Evening
115	\$400 ROADSTER PONY to Bike, Junior Exhibitor, 17 and Under Entry fee \$45.00	Thu. Matinee
158	<b>\$2,000 AMATEUR EXHIBITOR NATIONAL CHAMPIONSHIP</b> Ponies must have been shown in class 62. Entry fee \$250.00	Fri. Evening
190	<b>\$2,000 NATIONAL CHAMPIONSHIP</b> Ponies must have been shown in another class in this section Entry fee \$250.00	Sat. Evening

## AHHS YOUTH MEDALLION

(A registered Hackney Pony or Horse must show in this program)

Youth Medallion Finalists MUST be members of AHHS

FOR ALL CLASSES, SAFETY IS TO BE PARAMOUNT, WITH SUITABILITY OF EXHIBITOR TO PONY/HORSE AND EXHIBITOR'S ABILITY TO SHOW THE HACKNEY TO ITS BEST ADVANTAGE GIVEN FIRST CONSIDERATION. Hackney Horses are allowed in the AHHS Youth Medallion Pleasure Driving, Pleasure Under Saddle and Showmanship In-Hand Classes. One attendant is allowed to head pony or horse. They may stand an entry on its feet and thereafter remain at least two paces distant from the head, except in Showmanship In-Hand classes. To be eligible for the AHHS Youth Medallion Finals, the exhibitor must be a AHHS Junior Member in good standing and the combination of one pony/horse and driver/rider must have shown and placed (received a ribbon) in an official AHHS Youth Medallion class. In the AHHS Youth Medallion Roadster Pony, Pleasure Driving Pony or Horse, Hackney/Harness, and Roadster Pony Under Saddle Classes are to be judged according to HK132-133 the AHHS Youth Medallion class specifications.

AHHS Youth Medallion Showmanship In-Hand judge according to HK154-156.

133	<b>AHHS Youth Medallion National Championship, Showmanship In- Hand</b> Entry fee \$45.00	Fri. Morning
152	<b>AHHS Youth Medallion National Championship, ROADSTER PONY UNDER SADDLE, 17 &amp; under</b> Entry fee \$45.00	Fri. Evening
167	<b>AHHS Youth Medallion National Championship, Roadster Pony to Bike, 14-17</b> Entry fee \$45.00	Sat. Matinee
175	<b>AHHS Youth Medallion National Championship, ROADSTER PONY TO BIKE, 13 &amp; under</b> Entry fee \$45.00	Sat. Matinee

# Hackney Pony Division

Judging and Show Specifications for this Division please refer to USEF RULEBOOK CHAPTER HK 101- HK 153

## HACKNEY PONY

**Class No. 122- \$5,000+ HACKNEY PONY FOUR-YEAR-OLD AND UNDER UPHA CLASSIC GRAND CHAMPIONSHIP.** Ponies must be nominated, eligibility paid and placed first through sixth in a prior UPHA Hackney Pony Classic class during the year of the Grand Championship. Owners, drivers and trainers must be UPHA members. Ponies must compete in the section they have qualified in. All entry fees, including scratches, will be added back to a \$5,000 purse. \$300 will be deducted for 6th, 7th and 8th place (\$900 total) and the balance divided.

Awards are trophy plus:

1 <sup>st</sup>	2 <sup>nd</sup>	3 <sup>rd</sup>	4 <sup>th</sup>	5 <sup>th</sup>	6 <sup>th</sup>	7 <sup>th</sup>	8 <sup>th</sup>
40%	30%	15%	10%	5%	\$300	\$300	\$300

Entry fee: \$300 A non-refundable nominating fee of \$100 is to accompany entry blank. THE FINAL PAYMENT OF \$200 WILL BE CHARGED TO YOUR ACCOUNT 24 HOURS PRIOR TO THE START OF THE SESSION IN WHICH THE CLASS IS HELD. ENTRIES MUST BE SCRATCHED IN THE SHOW OFFICE IF YOU DO NOT INTEND TO SHOW. If the horse is NOT scratched, your account will be charged for the final payment of \$200. Entry fee money is non-refundable as it becomes part of the prize money.

INCLUDE SIRE AND DAM ON ENTRY FORM

Thursday Evening

**Class No.**

36	\$400 AMATEUR EXHIBITOR Entry fee \$45.00	Mon. Evening
100	\$400 OPEN HACKNEY PONY Entry fee \$45.00	Wed. Evening
162	\$2,000 AMATEUR EXHIBITOR NATIONAL CHAMPIONSHIP Ponies must have been shown in Class 36. Entry fee \$250.00	Fri. Evening
171	\$2,000 NATIONAL CHAMPIONSHIP Ponies must have shown in another class in this section. Entry fee \$250.00	Sat. Matinee

## HARNESS PONY DIVISION

**Class No. 127- \$5,000+ HARNESS PONY FOUR-YEAR-OLD AND UNDER UPHA CLASSIC GRAND CHAMPIONSHIP.** Ponies must be nominated, eligibility paid and placed first through sixth in a prior UPHA Harness Pony Classic class during the year of the Grand Championship. Owners, drivers and trainers must be UPHA members. Ponies must compete in the section they have qualified in. All entry fees, including scratches, will be added back to a \$5,000 purse. \$300 will be deducted for 6th, 7th and 8th place (\$900 total) and the balance divided. Awards are trophy plus:

1 <sup>st</sup>	2 <sup>nd</sup>	3 <sup>rd</sup>	4 <sup>th</sup>	5 <sup>th</sup>	6 <sup>th</sup>	7 <sup>th</sup>	8 <sup>th</sup>
40%	30%	15%	10%	5%	\$300	\$300	\$300

Entry fee: \$300. A non-refundable nominating fee of \$100 is to accompany entry blank. THE FINAL PAYMENT OF \$200 WILL BE CHARGED TO YOUR ACCOUNT 24 HOURS PRIOR TO THE START OF THE SESSION IN WHICH THE CLASS IS HELD. ENTRIES MUST BE SCRATCHED IN THE SHOW OFFICE IF YOU DO NOT INTEND TO SHOW. If the horse is NOT scratched, your account will be charged for the final payment of \$200. Entry fee money is non-refundable as it becomes part of the prize money.

INCLUDE SIRE AND DAM ON ENTRY FORM.

Thursday Evening

**Class No.**

24	\$400 AMATEUR HARNESS PONY Entry fee \$45.00	Mon. Evening
49	\$400 OPEN HARNESS PONY Entry fee \$45.00	Tue. Matinee
118	AHHS Youth Medallion National Championship Hackney/Harness Pony Entry fee: \$45.00	Thu. Matinee
155	\$2,000 AMATEUR EXHIBITOR NATIONAL CHAMPIONSHIP Ponies must have been shown in Class 24. Entry fee \$250.00	Fri. Evening

179 **\$2,000 NATIONAL CHAMPIONSHIP**  
 Ponies must have shown in another class in this section.  
 Entry fee \$250.00

Sat. Evening

## HACKNEY PONY PLEASURE DRIVING

**Class No. 124- \$5,000+ HACKNEY PONY PARK PLEASURE DRIVING PONY FOUR-YEAR-OLD AND UNDER UPHA CLASSIC GRAND CHAMPIONSHIP** Class to be judged according to HK122-HK124. Ponies must be nominated, eligibility paid and placed first through sixth in a prior UPHA Classic Hackney Park Pleasure Driving class during the year of the Grand Championship. Owners, exhibitors and trainers must be UPHA members. Ponies must compete in the section they have qualified. All entry fees, including scratches, will be added back to a \$5,000 purse. \$300 will be deducted for 6th, 7th and 8th place (\$900 total) and the balance divided: Awards are trophy plus:

1 <sup>st</sup>	2 <sup>nd</sup>	3 <sup>rd</sup>	4 <sup>th</sup>	5 <sup>th</sup>	6 <sup>th</sup>	7 <sup>th</sup>	8 <sup>th</sup>
40%	30%	15%	10%	5%	\$300	\$300	\$300

Entry fee: \$300. A non-refundable nominating fee of \$100 is to accompany entry blank. THE FINAL PAYMENT OF \$200 WILL BE CHARGED TO YOUR ACCOUNT 24 HOURS PRIOR TO THE START OF THE SESSION IN WHICH THE CLASS IS HELD. ENTRIES MUST BE SCRATCHED IN THE SHOW OFFICE IF YOU DO NOT INTEND TO SHOW. If the horse is NOT scratched, your account will be charged for the final payment of \$200. Entry fee money is non-refundable as it becomes part of the prize money.

INCLUDE SIRE AND DAM ON ENTRY BLANK.

Thursday Evening

**Class No.**

- |     |  |                |
|-----|--|----------------|
| 73  | \$400 ADULT EXHIBITOR, 18 Years and Over<br>Entry fee \$45.00  | Wed. Matinee   |
| 85  | \$400 JUNIOR EXHIBITOR, 17 Years and under<br>Entry fee \$45.00  | Wed. Matinee   |
| 109 | HACKNEY PLEASURE HORSE OR PONY UNDER SADDLE JUNIOR EXHIBITOR<br>Entry Fee \$45.00  | Thurs. Matinee |
| 137 | <b>AHHS YOUTH MEDALLION PLEASURE DRIVING National Championship</b><br>Driver to be 17 years of age and under.<br>Entry fee \$45.00 | Fri. Matinee   |
| 169 | <b>AHHS YOUTH MEDALLION SHOW PLEASURE HORSE OR PONY UNDER SADDLE NATIONAL CHAMPIONSHIP 17 &amp; UNDER</b><br>Entry fee \$45.00     | Sat. Matinee   |
| 184 | <b>\$2,000 AMATEUR EXHIBITOR NATIONAL CHAMPIONSHIP</b><br>Ponies must have been shown in class 73.<br>Entry fee \$250.00           | Sat. Evening   |

**THE CHALLENGE IS ON!**



## United Professional Horsemen's Association CHALLENGE CUP & CLASSICS

Showcasing the BEST in their pursuit of EXCELLENCE.

This year, hundreds of horses and riders entered the ring to compete in the UPHA Challenge Cup competitions and UPHA Classics with the determination to BE THE BEST.

A very special thanks to the sponsors who have made this pursuit a reality!

Best of luck to all entries in the UPHA Classic and Challenge Cup National Championships. For more information, or to participate in the UPHA Challenge Cup or UPHA Classics, contact the UPHA Office:

UPHA  
4059 Iron Works Parkway, Suite 2 Lexington, Kentucky 40511  
Phone: (859) 231-5070  
E-mail: [info@UPHAOnline.com](mailto:info@UPHAOnline.com)  
[www.UPHAOnline.com](http://www.UPHAOnline.com)



**UPHA/AMERICAN ROYAL NATIONAL CHAMPIONSHIP**  
*“The Grand Finale Of The Show Season”*  
**SPONSORSHIP FORM**

“Host of the UPHA Classics National Championships for American Saddlebred, Hackney, Roadsters as well as the AHHS Youth Medallion Finals”

Grand Benefactor..... \$10,000.00+  
Benefactor..... \$5,000.00  
UPHA National Championship Class ..... \$2,500.00  
Qualifying Class..... \$400.00  
Trophy Sponsor..... \$250.00  
Contributing Sponsor..... \$125.00

Company/Corporation /Farm Name \_\_\_\_\_  
(Please advise how you would like your name listed in the program)

Contact Name \_\_\_\_\_

Address \_\_\_\_\_

City, State, Zip \_\_\_\_\_

Phone \_\_\_\_\_ Email \_\_\_\_\_

All sponsorships are tax deductible to the extent allowed by law.  
THE UPHA FOUNDATION IS A 501(C)(3) NOT FOR PROFIT CORPORATION

\_\_\_\_\_ Check (Please make check payable to the UPHA Foundation, Inc.)

\_\_\_\_\_ Visa \_\_\_\_\_ Master Card \_\_\_\_\_ American Express

Card Number \_\_\_\_\_

Exp. Date \_\_\_\_\_ CVV Code \_\_\_\_\_ Billing Zip \_\_\_\_\_

Cardholder's Name \_\_\_\_\_

Billing Address \_\_\_\_\_

Cardholder's Signature \_\_\_\_\_

*PAYMENT: \*\*\*A 4% Convenience Fee will be added to All Credit Card Transactions*

**PLEASE RETURN TO THE ATTENTION OF:**  
**NANCY BECKER**

UPHA, Inc. 4059 Iron Works Parkway, Suite 2 Lexington, Kentucky 40511  
Phone: 859-351-4317 Email: [nbecker@uphaonline.com](mailto:nbecker@uphaonline.com)

